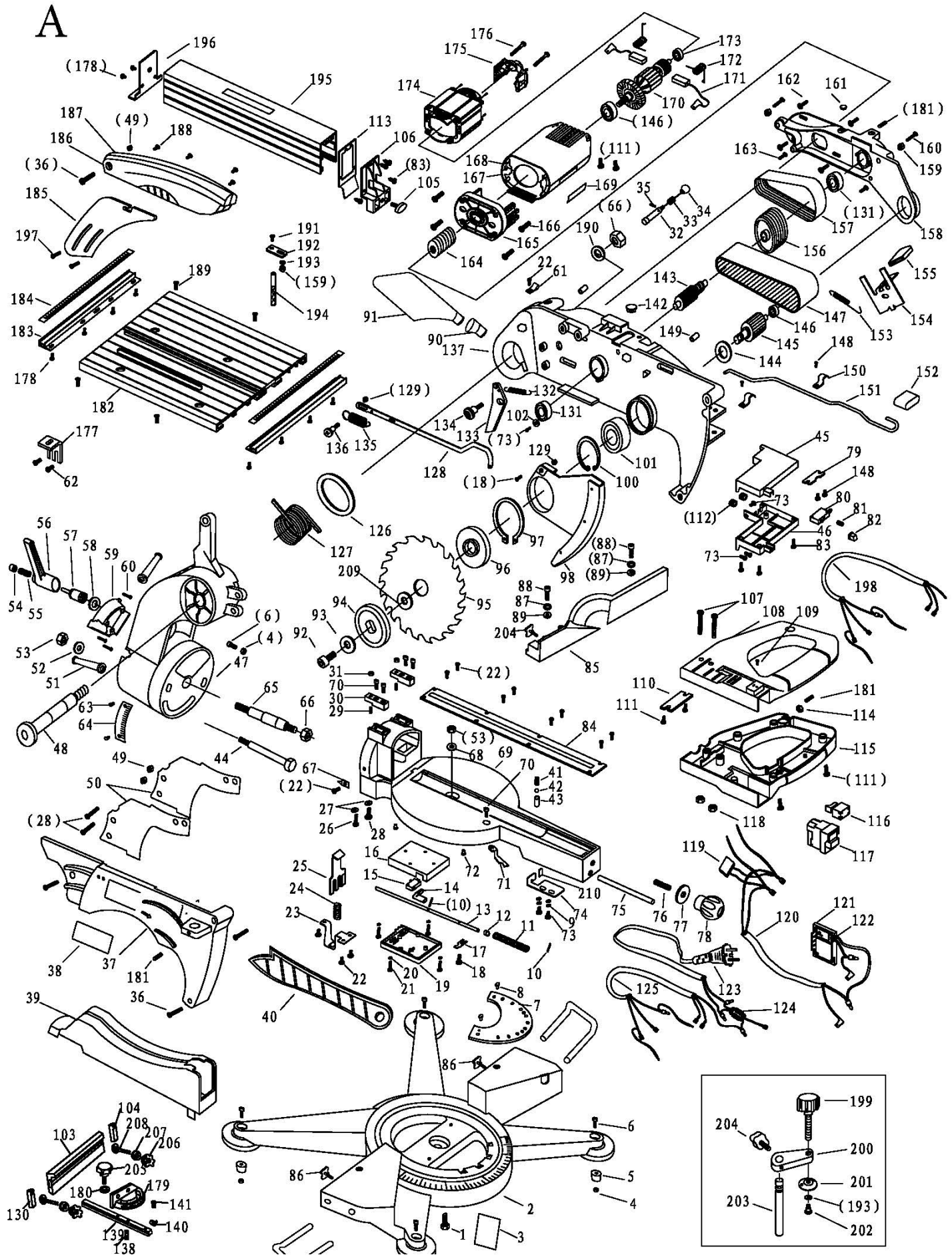


# scheppach

**5901103901**

Table-Mitre Saw  
HM100T scheppach -  
220-240V 50Hz 1800W







5901103901

Table-Mitre Saw  
HM100T scheppach -  
220-240V 50Hz 1800W



**Main products**

**Spare part list**

5901103901

133314 - 0110 - - -

Spare	Description	additional	Item	Abb.	ConstructStatus
02093366	screw	M8x25, 8.8, verzinkt, DIN933	1	A	*
3401101114	Base		2	A	*
3401101001	rubber foot cpl.		4,5	A	*
02091237	cheese head screw M6x20 8.8 912 VZ	M6x20	6	A	*
3908201059	spring washer part 48		9	A	*
02798511	screw	M4x10 4.8 DIN7985 verzinkt	18	A	*
02798516	oval head screw	M4x30 DIN 7985 4.8 galvanized	21	A	*
02798514	oval head screw	M4x20	26	A	*
02012504	washer	A6	27	A	*
05008405	LINSENSCHRAUBE - PTKB	5x16	28	A	*
02083522	STUD BOLT M8x30 5.6 835 VZ	M8x30	29	A	*
5901103002	agnle block		30	A	*
01093405	nut	M8, blank, DIN934 - 8	31	A	*
88002637	pan head screw	M5x30 galvanized	36	A	*
3401101002	saw blade guard part 39		39	A	*
53206208	push stick		40	A	*
02093378	Hexagon bolt	M8x90	44	A	*
3401101003	miter saw switch cover part 45		45	A	*
3401101004	miter saw switch seat part 46		46	A	*
05001201	selflocking hexagon nut	M5 6 BIW VZ	49	A	*
3401101005	guard board part 50		50	A	*
02098505	nut	M8, verzinkt, DIN985	53	A	*
05006121	clamping lever	M8	54-57	A	*
02012508	washer	A13 ST 125 VZ	58	A	*
02798525	Oval-head screw	M5x25	60	A	*



### Main products

### Spare part list

5901103901

133314 - 0110 - - -

Spare	Description	additional	Item	Abb.	ConstructStatus	
02798532	oval head screw	M6x12 4.8 DIN7985 galvanized	62	A	*	
02098507	Sechskantmutter selbstsichernd	M12	66	A	*	
3401101006	pointer on support bar part 67		67	A	*	
02012506	washer	Ø8,4 / Ø16 x 1.6, Form A, verzinkt. DIN125	68	A	*	
5901103001	turntable		69	A	*	
02091224	screw	M5x16, verzinkt, 8.8 DIN912	70	A	*	
3401101007	turnplate pointer part 71		71	A	*	
1902403076	Phillips screw	M5x16	73	A	*	
02083522	STUD BOLT M8x30 5.6 835 VZ	M8x30	76	A	*	
3401101008	fasten washer part 77		77	A	*	
3401101009	turnplate fastern handle part 78		78	A	*	
02798123	oval head sheet metal screw	B4.2x13	83	A	*	
3401101035	blade guard assy. part 183+105+106+113+178+19+196		83,105,106,113,178	A	*	not available anymore
3401101010	kerf board		84	A	*	
3401101011	fence part 85		85	A	*	
02013707	SPRING WASHER A8 FEDST 137 VZ	A8	87	A	*	
02091249	screw	M8x30	88	A	*	
3401101012	dia 8 flat washer part 89		89	A	*	
3401101013	output connector part 90		90	A	*	
3901205129	dust bag		91	A	*	
3901204030	bolt	M8x16 links	92	A	*	
3901204032	fixed circle		93	A	*	
3901205090	inner sawblade flange		94	A	*	
3901203701	HW saw blade Ø 254 x 30 x 2,8 x 2,0 mm / 60 T		95	A	*	
3401101014	inner flange part 96		96	A	*	



5901103901

Table-Mitre Saw  
HM100T scheppach -  
220-240V 50Hz 1800W



**Main products**

**Spare part list**

5901103901

133314 - 0110 - - -

Spare	Description	additional	Item	Abb.	ConstructStatus
01047240	circlip ring	J 47x1.75 , blank, DIN472	97	A	*
3401101015	protect guard part 98		98	A	*
01047137	CIRCLIP RING A 40x1,75 FEDST 471 BK	A 40x1.75	100	A	*
06206203	ball bearing	6203 ZZ	101	A	*
02734903	washer	5,3 ST 7349 VZ	102	A	*
5901102052	thumb screw part 178		105	A	*
3401101016	fence cover part 106		106	A	*
02798529	Linsenschraube	M5x45	107	A	*
3401101038	hand cover part 108		108	A	*
3401101017	output mouth part 112		112	A	*
3401101018	front cover part 113		113	A	*
02093404	Hexagon nut	M6	114	A	*
3401101019	handle part 115		115	A	*
3401101020	switch (two) part 116		116	A	*
5901102038	switch part 114		117	A	*
02093403	Hexagon nut	M5	118	A	*
3901207048	capacitor	0,33µF / 250V-300V	119	A	*
3401101039	soft start part 122		122	A	*
3906401015	power supply cord part 15		123	A	*
02093402	hexagon nut	M4 DIN 934-8 galvanized	129	A	*
06106201	BALL BEARING		131	A	*
3401101021	M4 screw		136	A	*
340110115	Guard		137	A	*
06406000	Rillenkugellager	6000 2 RS	146	A	*
3401101022	belt	7PJ336	147	A	*


**Main products**
**Spare part list**

5901103901

133314 - 0110 - - -

Spare	Description	additional	Item	Abb.	ConstructStatus
3401101023	belt	7PJ336 x 16,5x3,5	157	A	*
02098504	selflocking nut	M6 galvanized DIN985	159	A	*
02798540	Phillips screw	M6x50	160	A	*
02798532	oval head screw	M6x12 4.8 DIN7985 galvanized	162	A	*
3401101024	motor cpl. part 164-176	230V/50Hz 1800W	164-176	A	*
3401101025	motor housing part 167		167	A	*
3401101026	motor cover part 168		168	A	*
3401101027	rotor		170	A	*
3401101028	carbon brush (Set=2 pieces)	(Satz=2 Stück)	171	A	*
3309650002	ball bearing		173	A	*
3401101029	stator part 174		174	A	*
3401101030	support bar part 177		177	A	*
3401101031	board cpl. part 178+182-184		178,182-184	A	*
02091620	Threaded pin	M6x8 45H galvanized DIN196	181	A	*
3401101032	length scale part 184		184	A	*
3401101033	riding knife part 185		185	A	*
3401101034	saw blade guard cpl. part 186-188		186-188	A	*
02096334	countersunk screw	M6x16 5.8 963 VZ	189	A	*
3901204020	workpiece fence cpl.		193,199-204	A	*
3401101036	rear cover part 196		196	A	*
02798532	oval head screw	M6x12 4.8 DIN7985 galvanized	197	A	*
3401101037	mitre guage		o.Abb	A	*

!!! Do you know: From now on you can view spare parts lists in our spare parts shop and order spare parts and accessories directly. More information can be found here: <https://www.scheppach.com/Shop.aspx>