

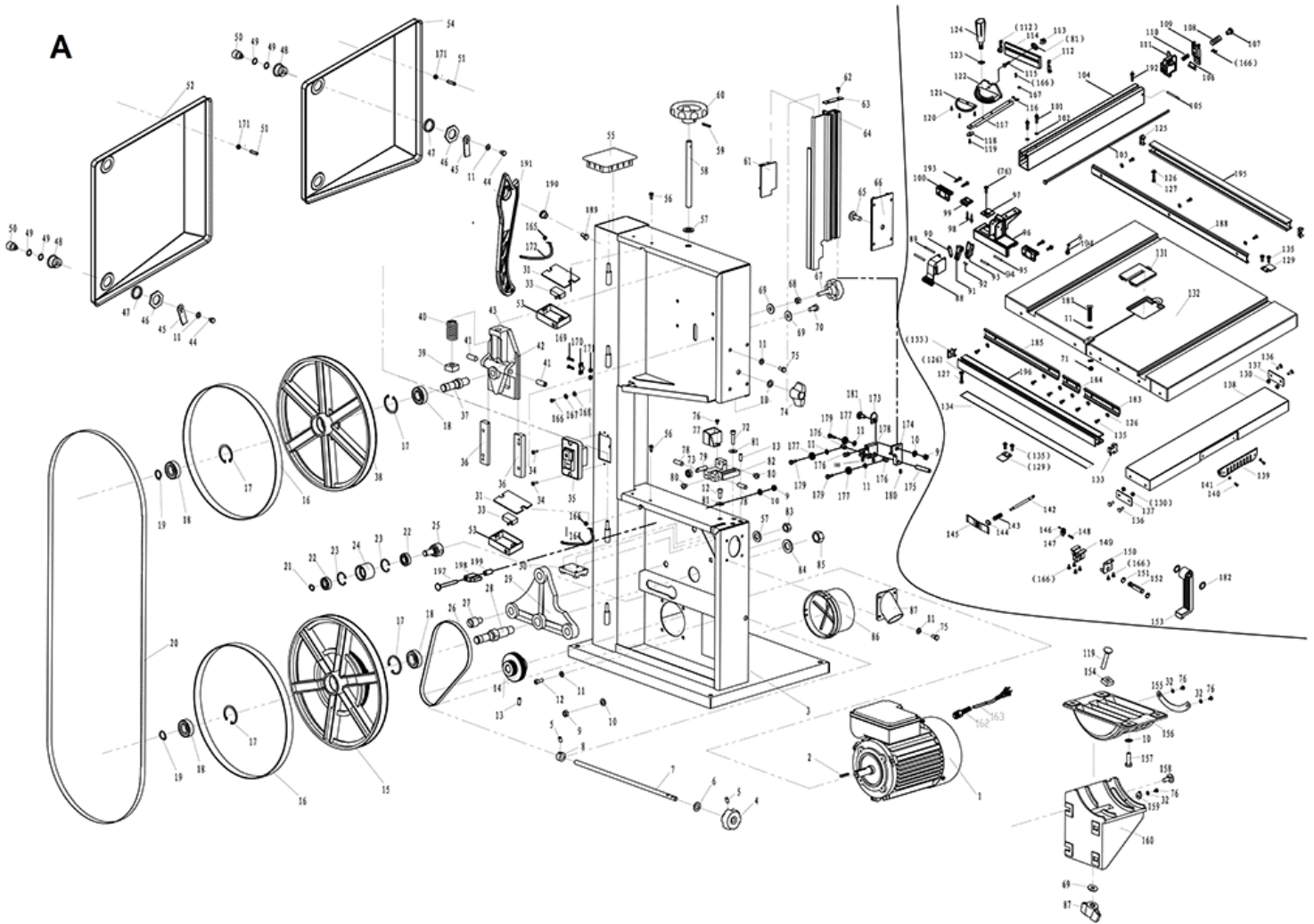
Scheppach

5901503905

Bandsaw HBS400
scheppach - 230V 50Hz
740W - 175mm



A





Ausführung "B" neu

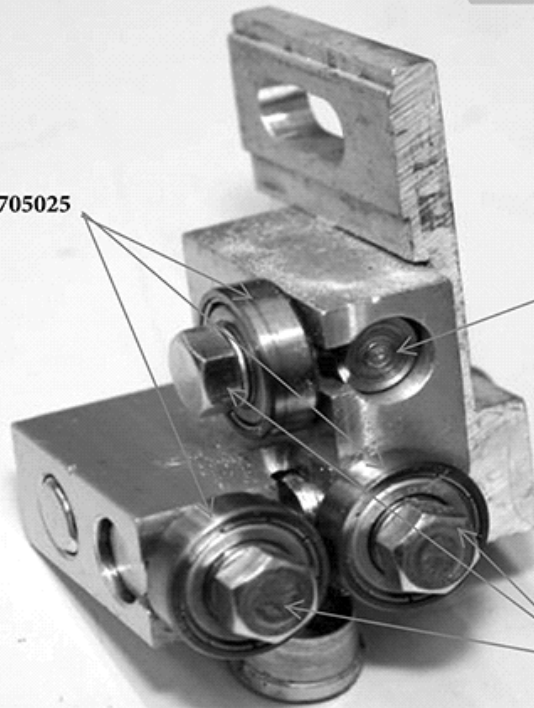
Einzelteile Bandführung oben 4901501063

Kugellager Art.Nr.: 3906705025

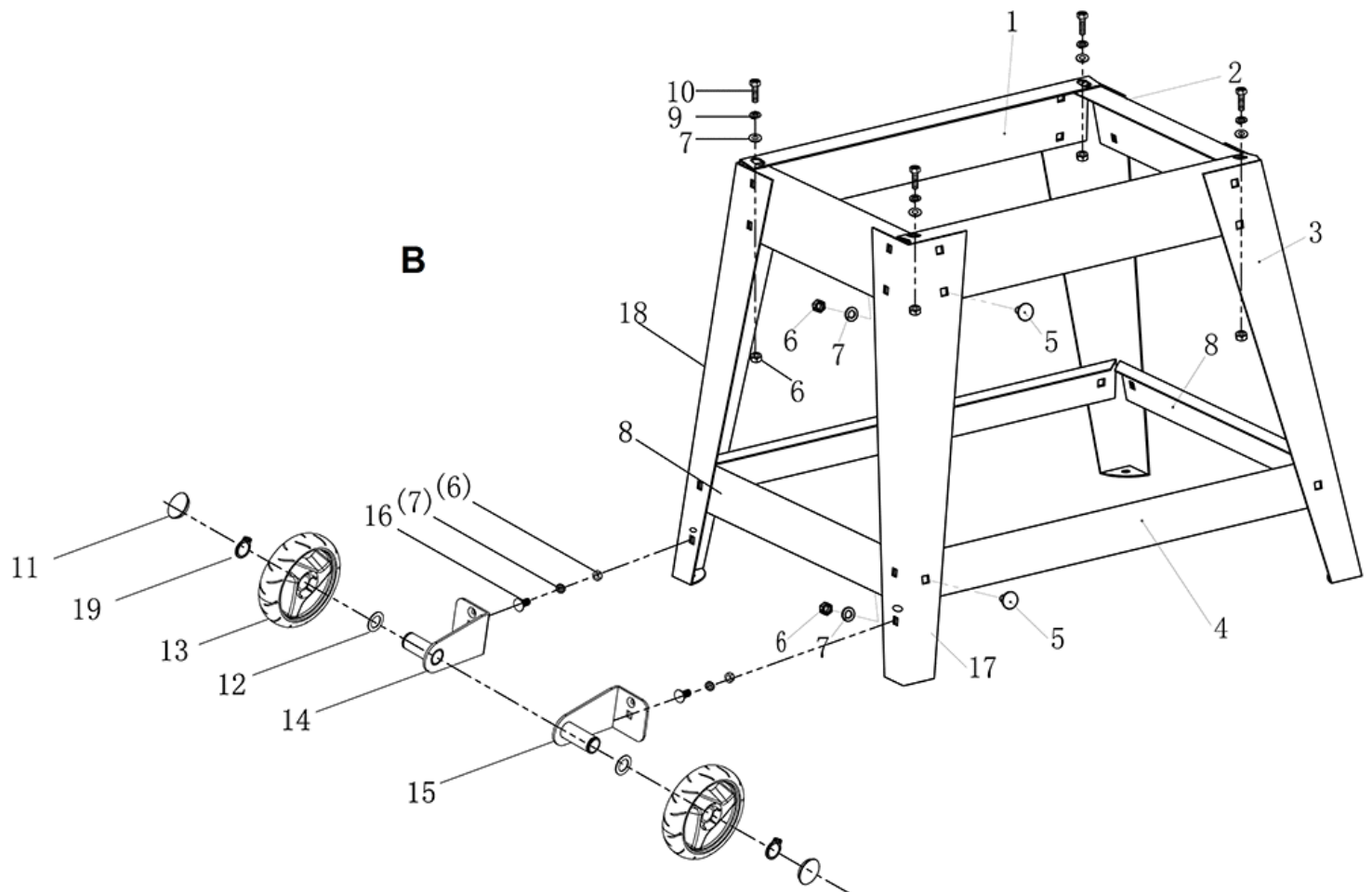
Gewindebolzen Art.Nr.: 4901501058

A

Bundschaube M5x18 Art.Nr.: 4901501057



B





Main products

Spare part list

5901503905

133715 - 0110 - HBS300xwb - -

Spare	Description	additional	Item	Abb.	ConstructStatus
4901501001	Engine	220-240v/50Hz 1400rpm P1 750W P2 520W B14	1	A	*
01688522	PASSFEDER	A5x5x28	2	A	*
4901501066	body part 3		3	A	*
4901501002	shaft		4, 7	A	*
02091622	Threaded pin	M6x12	5	A	*
02902109	washer	A 10.5	6	A	*
01093405	nut	M8, blank, DIN934 - 8	9	A	*
02902108	washer	A8Ø23/8x2	10	A	*
02902106	washer	A6.4 Ø18/6.4x1.5	11	A	*
4901501016	lock		11, 44 - 50	A	*
4901501063	sawband guiding cpl.	"new version"	11, 173 - 180	A	*
02008438	cylinder head screw	M6x16	12	A	*
02091623	GEWINDESTIFT	M6x16	13	A	*
4901501003	pulley		14	A	*
4901501004	band wheel		15, 16	A	*
1901503004	buckstay		16	A	*
01047233	Circlip ring	J40x1,75 BK DIN472	17	A	*
06406203	ball bearing	6203-2RS1/QE6	18	A	*
01047114	circlip ring A 17x1,0 FEDST 471 BK	A 17x1.0	19	A	*
3901502141	Bandsaw blade 2240mm / 13mm / 0,5mm / 4 TPI	2240mm / 13mm / 0,5mm / 4 Z/Z	20	A	*
3901502702	Bandsaw blade 2240mm / 6mm / 0,5mm / 6 TPI		20	A	*
3901502703	Bandsaw blade 2240mm / 6mm / 0,4mm / 24 TPI		20	A	*
01047109	CIRCLIP RING A 12x1,0 FEDST 471 BK	A 12x1.0	21	A	*
4901501005	roller		21 - 25	A	*
5911203052	bearing part C-4		22	A	*



5901503905

Bandsaw HBS400
scheppach - 230V 50Hz
740W - 175mm



Main products

Spare part list

5901503905

133715 - 0110 - HBS300xwb - -

Spare	Description	additional	Item	Abb.	Construct	Status
4901501006	belt	610x9.5x4	26	A	*	
4901501007	anchor chair		27 - 29	A	*	
4901501008	Block		30	A	*	
02093402	hexagon nut	M4 DIN 934-8 galvanized	31	A	*	
02012502	washer	Ø4 / DIN125	32	A	*	
4901501009	switch		33	A	*	
02798511	screw	M4x10 4.8 DIN7985 verzinkt	34	A	*	
3901313006	switch	KJD12-14 18A 230V 5E4	35	A	*	
4901501010	slide bar		36	A	*	
4901501011	bearing block		37, 41, 42	A	*	
4901501012	band wheel		38, 16	A	*	
4901501013	nut		39	A	*	
4901501014	spring		40	A	*	
4901501015	sliding fit		43	A	*	
5901503001	lower door part 52		52	A	*	not available anymore
5901503002	upper door part 54		54	A	*	
4901501019	cap		55	A	*	
4901501020	srew		58-60	A	*	
01148109	CLAMPING SLEEVE 4x24 FEDST 1481 BK	4x24	59	A	*	
4901501020	srew		60	A	*	
4901501021	cutting lock		61	A	*	
4901501059	upper buttom "B"		64	A	*	
4901501023	covering		65, 66, 87	A	*	
4901501024	screw		67	A	*	
02902108	washer	A8Ø23/8x2	69	A	*	



5901503905

Bandsaw HBS400
scheppach - 230V 50Hz
740W - 175mm



Main products

Spare part list

5901503905

133715 - 0110 - HBS300xwb - -

Spare	Description	additional	Item	Abb.	ConstructStatus
02093404	Hexagon nut	M6	71	A	*
4901501025	handle		74	A	*
02091236	cheese head screw	M6x16 8.8 912 VZ	75	A	*
5901503003	lenght fence cpl.		76, 88 -111, 100A 166, 192		*
4901501026	protection		77	A	*
4901501061	guide pin		78	A	*
4901501062	lower band guiding cpl.		79, 91, 92, 93, 95		*
3906705025	bearing		79, 147	A	*
5901503010	mitre gauge cpl.		81, 112 - 124, 106, 167		*
4901501028	dust outlet part 99		86	A	*
4901501029	Branch		87	A	*
5901503004	pointer part 97		97	A	*
5901503005	clamping plate for fence part 100		100	A	*
5901503006	triangular block part 106		106	A	*
5901503007	adjustable nut part 107	M5	107	A	*
5901503008	spring 3 part 108		108	A	*
5901503009	back cover for fence part 111		111	A	*
5901503011	plastic cover for fence part 112		112	A	*
5901503012	fence for mitre gauge part 114		114	A	*
5901503013	central guarding board part 131		131	A	*
5901503014	working table		132	A	*
5901503015	end cap 2 part 133		133	A	*
5901503016	scale self-adhesive part134		134	A	*
5901503017	extensive working table part 138		138	A	*
5901503018	side plate guard part 139		139	A	*



Main products

Spare part list

5901503905

133715 - 0110 - HBS300xwb - -

Spare	Description	additional	Item	Abb.	ConstructStatus
5901503019	fasten wrench		153	A	*
02060314	SAUCER-HEAD SCREW M6x20 4.6 603 VZ	M6x20, 8.8, verzinkt, DIN603	158	A	*
4901501042	display		159	A	*
4901501043	bracket		160	A	*
4901501058	pin(3)		176	A	*
3906705025	bearing		177	A	*
4901501057	out hex screw	M5X18	179	A	*
5901503020	fix rod 1 part 183		183	A	*
5901503021	fix rod (short) part 184		184	A	*
5901503022	fix rod 2 part 185		185	A	*
02031504	WING NUT M6 GT 315 VZ	M6	186	A	*
02093350	Hexagon bolt	M6x35 8.8 DIN933 galvanzied	187	A	*
5901503023	Gleitschiene hinten Teil 188		188	A	*
5901503024	knob for tool box part 190	M8	190	A	*
5901503025	push stick		191	A	*
02798122	OVAL HEAD SHEET METAL SCREW B4,2x9,5 4.6 7981 VZ	B4.2x9.5	192	A	*
5901503026	extensive rod1 part 195		195	A	*
5901503027	extensive rod2 part 196		196	A	*
4906904041	capacitor part 41	20 µF / 450V	o.Abb.	A	*
73190108	fan cover for motor		o.Abb.	A	*
88002879	fan wheel part w/o		o.Abb.	A	*
4901501048	strut long upper part w/o		1	B	*
4901501045	stand		1 - 19	B	*
4901501046	strut short upper part w/o		2	B	*
4901501050	stand feet part w/o		3	B	*



Main products

Spare part list

5901503905

133715 - 0110 - HBS300xwb - -

Spare	Description	additional	Item	Abb.	ConstructStatus
4901501049	strut long below		4	B	*
02060396	SAUCER-HEAD SCREW M8x16 4.6 603 VZ	M8x16	5	B	*
02093405	hexagon nut M8	M8	6	B	*
02012506	washer	Ø8,4 / Ø16 x 1.6, Form A, verzinkt. DIN125	7	B	*
5901503028	lower rung3 part 8		8	B	*
02012707	spring ring	Ø8,1 / Ø14,8 x 4,6 From A8, verzinkt, DIN127	9	B	*
02093370	hexagonal screw	M8x45 DIN 933	10	B	*
5901503029	cap for wheel	Ø43	11	B	*
02012562	Washer shape B	Ø37/21x2.8	12	B	*
5901503030	wheel		13	B	*
5901503031	wheel stand cpl. right part 16		14	B	*
5901503032	wheel stand cpl.		15	B	*
02060329	SAUCER-HEAD SCREW M8x20 4.6 603 VZ	M8x20	16	B	*
5901503033	leg		17	B	*
5901503034	leg3 part 20		18	B	*
01047117	CIRCLIP RING A 20x1,2 FEDST 471 BK	A 20x1.2	19	B	*
4901501051	accessorie bag		o.Abb.	B	*
4901501052	rubber foot		o.Abb.	B	*