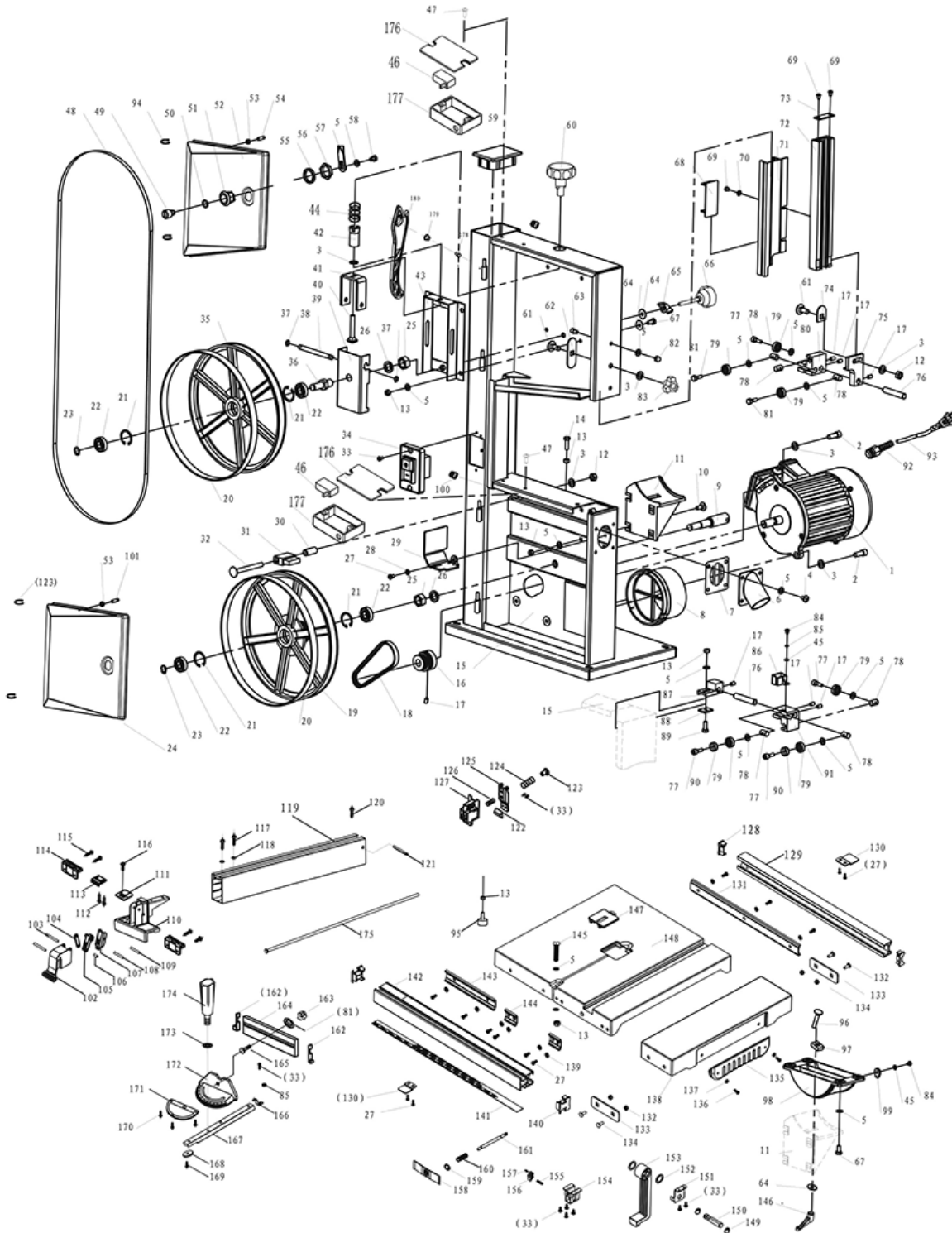


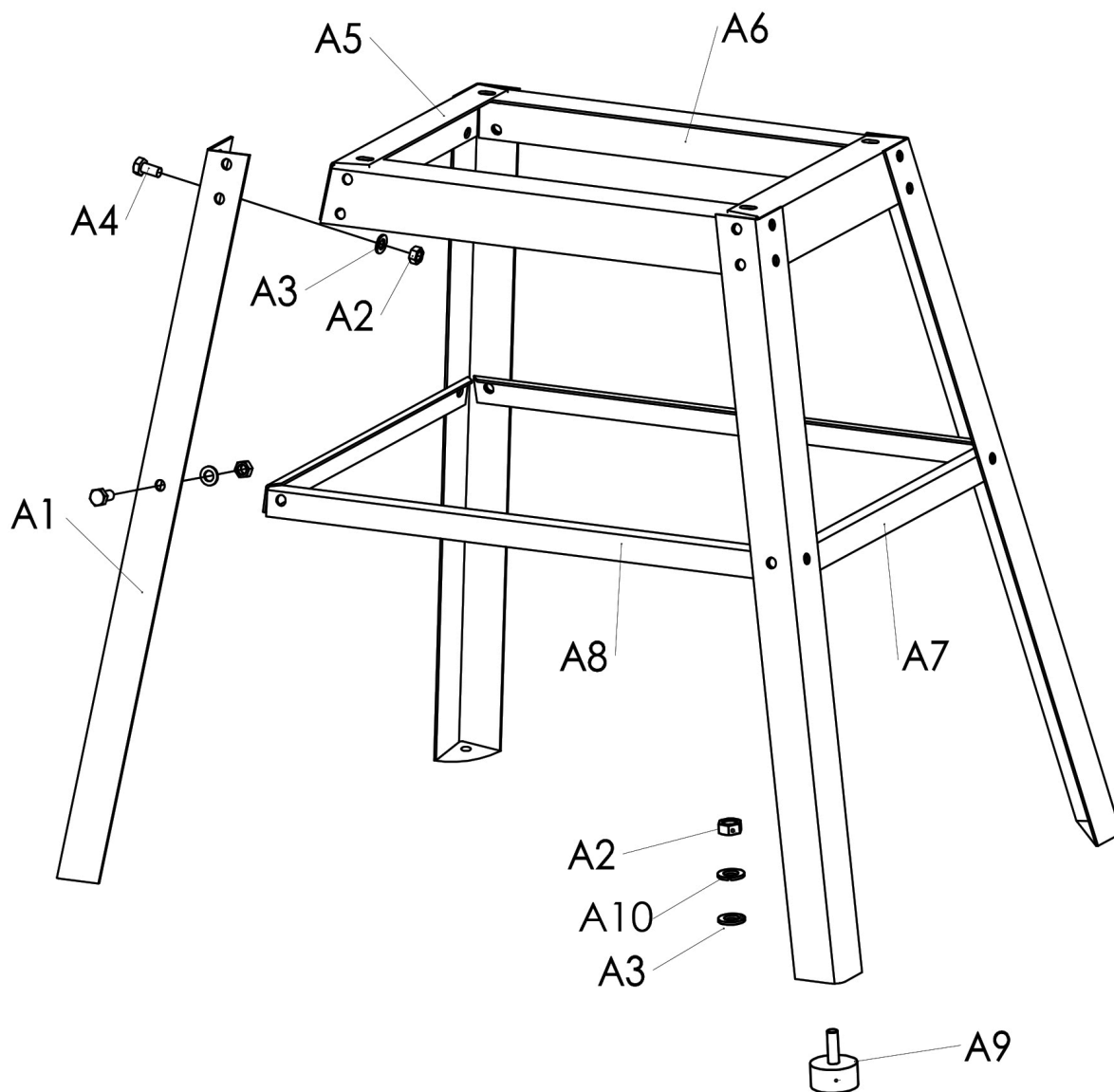


## A





## B



### Main products

5901505901

### Spare part list

133732 - 0110 - HBS250 / HBS261 - -

Spare	Description	additional	Item	Abb.	ConstructStatus
5901505001	motor 0.42kW 230V/50Hz B14 part 1	0.42kW/230V/50Hz B14	1	A	HBS250
5901505047	Motor 0.55kW 220-240V 50Hz	0.55kW/220-240V/50Hz HBS261	1	A	HBS261
02091247	cheese head screw	M8x20 8.8 912 VZ	2	A	*
02902108	washer	A8Ø23/8x2	3	A	*



5901505901

Bandsaw HBS261  
scheppach - 220-240V  
50Hz 550W - 120mm



**Main products**

**Spare part list**

5901505901

133732 - 0110 - HBS250 / HBS261 - -

Spare	Description	additional	Item	Abb.	ConstructStatus
1901301011	screw M6x10 part 41		4	A	*
02012504	washer	A6	5	A	*
4901501029	Branch		6	A	*
4901501068	Dichtung Stutzen		7	A	*
4901501028	dust outlet part 99		8	A	*
5901505002	driving wheel axle cpl. part 9+25+26		9,25,26	A	*
02060313	SAUCER-HEAD SCREW M6x16 4.6 603 VZ	M6x16	10	A	*
5901505003	worktable brakel part 11		11	A	*
02093405	hexagon nut M8	M8	12	A	*
02093404	Hexagon nut	M6	13	A	*
02091237	cheese head screw M6x20 8.8 912 VZ	M6x20	14	A	*
5901505004	electric motor belt wheel part 16		16	A	*
02091323	Gewindestift	M6x10	17	A	*
5901505005	belt 4PJx335	4PJx335 x 10x4	18	A	*
5901505006	driver cpl.		19,20	A	*
01047221	CIRCLIP RING J 28x1,2 FEDST 472 BK		21	A	*
06206001	deep-groove ball bearing	6001-2Z/QE6	22	A	*
01047109	CIRCLIP RING A 12x1,0 FEDST 471 BK	A 12x1.0	23	A	*
5901505007	lower door		24	A	*
5901505008	shaft cpl. part 25+26+36		25,26,36	A	*
05005417	Oval head screw	M5x10	27	A	*
02012503	washer	Ø5	28	A	*
5901505009	windshield		29	A	*
73190036	Scraper brush 31504015		31	A	*
02060339	SAUCER-HEAD SCREW M8x70 4.6 603 VZ	M8x70	32	A	*



5901505901

Bandsaw HBS261  
scheppach - 220-240V  
50Hz 550W - 120mm



Main products

Spare part list

5901505901

133732 - 0110 - HBS250 / HBS261 - -

Spare	Description	additional	Item	Abb.	ConstructStatus
02798511	screw	M4x10 4.8 DIN7985 verzinkt	33	A	*
88000077	On / Off switch	10 (8)A / 250V KJD20	34	A	*
5901505010	driven wheel cpl.		35,20	A	*
3902202045	locking ring part 68	8x0.8	37	A	*
5901505011	adjusting rod part 38		38	A	*
02060332	saucer-head screw	M8x35 8.8 603 VZ	40	A	*
5901505012	adjustable piece part 41		41	A	*
5901505013	adjustable connecting pole		42	A	*
5901505014	adjusting spring part 44		44	A	*
02012502	washer	Ø4 / DIN125	45	A	*
4901501009	switch		46,176,177	A	*
02798131	OVEL HEAD SHEET METAL SCREW 4,8X9,5	4.8x9.5	47	A	*
7901505701	Saw band 1790mm / 10mm / 0,35mm / 6 Z/Z		48	A	*
4901501016	lock		49-51,55-58,5	A	*
5901505015	upper door part 52		52	A	*
02093403	Hexagon nut	M5	53	A	*
02055138	Threaded pin	M5x30 DIN915	54	A	*
5901505016	plastic plug part 59		59	A	*
5901505017	adjust handle 2		60	A	*
02060329	SAUCER-HEAD SCREW M8x20 4.6 603 VZ	M8x20	61	A	*
02902106	washer	A6.4 Ø18/6.4x1.5	64	A	*
05006311	wing nut	P 120 32 16 PA6/ST PELTZER	65	A	*
5901505018	M6 screw part 66		66	A	*
02093346	hexagon bolt	M6x16 8.8 933 VZ	67	A	*
5901505019	plastic clapboard part 68		68	A	*



5901505901

Bandsaw HBS261  
scheppach - 220-240V  
50Hz 550W - 120mm



**Main products**

**Spare part list**

5901505901

133732 - 0110 - HBS250 / HBS261 - -

Spare	Description	additional	Item	Abb.	ConstructStatus
02798131	OVEL HEAD SHEET METAL SCREW 4,8X9,5	4.8x9.5	69	A	*
5901505020	sliding track piece cpl. part 69-73		69-73	A	*
5901505021	sawband guiding upper	56x49x62	75-81,5,17	A	*
5901505023	sawband guiding lower cpl.		76-79,87,90,91,5,17	A	*
5901505048	M5x18 inner hex screw	M5x18; Bund Ø6x5mm ; Innensechskant	77	A	*
4901501058	pin(3)		78	A	*
3906705025	bearing		79	A	*
4901501057	out hex screw	M5X18	81	A	*
3902202131	Nut	M5	82	A	*
05006017	star handle nut M8	M8	83	A	*
02798509	oval head screw	M4x6 4.8 7985 VZ	84	A	*
5901505022	protecting sleeve part 86		86	A	*
5901505050	pressure board "C"	M6	88	A	*
02091236	cheese head screw	M6x16 8.8 912 VZ	89	A	*
5901505024	stuck from pulling with screw connect part 92		92	A	*
39013189009	UK plug&cord part 25		93	A	*
3902403013	rubber foot part 1-30		95	A	*
02060316	SAUCER-HEAD SCREW M6x30 4.6 603 VZ	M6x30	96	A	*
5901505025	sliding pressure board part 97		97	A	*
5901505026	table support part 98		98	A	*
5901505027	worktable angle pointer part 99		99	A	*
5901505028	lenght fence cpl.		102-127,175,33A		*
5901503004	pointer part 97		111	A	*
5901503005	clamping plate for fence part 100		113	A	*
02091235	cheese head screw	M6x12 8.8 912 VZ	117	A	*



5901505901

Bandsaw HBS261  
scheppach - 220-240V  
50Hz 550W - 120mm



**Main products**

**Spare part list**

5901505901

133732 - 0110 - HBS250 / HBS261 - -

Spare	Description	additional	Item	Abb.	ConstructStatus
02679806	serrated lock washer A6,4 6798 VZ	A 6.4	118	A	*
02798122	OVAL HEAD SHEET METAL SCREW B4,2x9,5 4.6 7981 VZ	B4.2x9.5	120	A	*
5901503006	triangular block part 106		122	A	*
5901503007	adjustable nut part 107	M5	123	A	*
5901503008	spring 3 part 108		124	A	*
5901505029	end cap for extensiv bar 1 part 128		128	A	*
5901505030	extensive rod 1 part 129		129	A	*
5901505031	fix rod (long) part 131		131	A	*
5901503018	side plate guard part 139		135	A	*
02096502	Phillips screw	M5x10	136	A	*
5901505032	extensiv working table		138	A	*
5901503015	end cap 2 part 133		140	A	*
5901505033	scale self-adhesive part 141		141	A	*
5901505034	extensive rod 2 part 142		142	A	*
5901505035	fix rod 1 part 143		143	A	*
5901505036	fix rod (short)		144	A	*
05006125	Clamping lever, adjustable	M6	146	A	*
5901505037	table insert		147	A	*
5901505038	worktable part 148		148	A	*
01047109	CIRCLIP RING A 12x1,0 FEDST 471 BK	A 12x1.0	149	A	*
5901503035	fasten bar		150	A	*
5901503019	fasten wrench		153	A	*
5901505049	lock block + Ø4.5 x 20 pin + Ø3 x 12 large oval head socket shank rivet		155,156,157	A	*
5901501011	table lock assy.		158 - 161	A	*
5901503010	mitre gauge cpl.		162-174,33,81,88	A	*


**Main products**
**Spare part list**

5901505901

133732 - 0110 - HBS250 / HBS261 - -

Spare	Description	additional	Item	Abb.	ConstructStatus
5901503024	knob for tool box part 190	M8	179	A	*
5901503025	push stick		180	A	*
5901505039	fan wheel		o.Abb.	A	*
5901505040	fan cover part w/o		o.Abb.	A	*
3901504075	accessories bag part w/o		o.Abb.	A	*
5909402019	capacitance 10µF/450V part 45	10 µF / 450V	o.Abb.	A	*
5901505041	leg part A1		A1	B	*
02093405	hexagon nut M8	M8	A2	B	*
5901505046	screw bag stand		A2-A4,A9,A10	B	*
02012506	washer	Ø8,4 / Ø16 x 1.6, Form A, verzinkt. DIN125	A3	B	*
02093364	hexagon bolt	M8x16 8.8 DIN933 galvanized	A4	B	*
5901505042	strut 2 part Teil A5		A5	B	*
5901505043	strut 1 part A6		A6	B	*
5901505044	strut 4 part A7		A7	B	*
5901505045	strut 3		A8	B	*
4901501052	rubber foot		A9	B	*
02012707	spring ring	Ø8,1 / Ø14,8 x 4,6 From A8, verzinkt, DIN127	A10	B	*
02043904	FLAT HEXAGON NUT BM6 439 VZ	BM6	o.Abb.	B	*
02093351	hexagon bolt	M6x40	o.Abb.	B	*
02902106	washer	A6.4 Ø18/6.4x1.5	o.Abb.	B	*