

Art. 510 - 511

DATI TECNICI - TECHNICAL DATA - TECHNISCHE DATEN - DONNÉES TECHNIQUES - DATOS TÉCNICOS - DADOS TÉCNICOS

SCHEMA ELETTRICO / WIRING DIAGRAM / ELEKTRISCHER SCHALTPLAN - / SCHÉMA ÉLECTRIQUE
ESQUEMA ELÉCTRICO / ESQUEMA ELÉCTRICO

Lunghezza - Length - Länge - Longueur - Longitud - Comprimento	(mm)	500
Larghezza - Width - Breite - Largeur - Anchura - Largura	(mm)	450
Altezza - Height - Höhe - Hauteur - Altura - Altura	(mm)	350
Massa - Weight - Masse - Masse - Peso - Massa	(Kg)	15
Tipo motore - Type of moto - Motortyp - Type de moteur - Tipo de motor - Tipo de motor		Induzione - Induction type - Induktionsmotor - À Induction - Inducción - Indução
Potenza motore - Motor Power - Motorleistung - Puissance moteur - Potencia del motor - Potência do motor	(W)	600 art. 510
	(W)	550 art 511
Tensione di alimentazione - Supply voltage - Versorgungsspannung - Tension d'alimentation - Tensión de alimentación - Tensão de alimentação	(V)	230 MF art. 511
	(V)	400 TF art 510
Frequenza - Frequency - Frequenz Hz - Fréquence - Frecuencia - Frequência	(Hz)	50
Velocità - Speed - Drehzahl - Vitesse - Velocidad - Velocidade		2800
Dimensioni - Dimensions - Abmessungen - Dimensions MAXI de l - Tamaño - Dimensões: Nastro - Belt - Band - Ruban - Cinta - Tápete	(mm)	100x1000

IT

I Interruttore Start/Stop
 C Condensatore
 U< Relé di minima tensione
 M, M1, M2, Motore
 PE Messa a terra
 L1, L2, L3 Linea di alimentazione

EN

I Start / Stop switch
 C Condensator
 U< Min. voltage relay
 M, M1, M2, Motor
 PE Grounding point
 L1, L2, L3 Power supply line

DE

I Start-Stopp-Schalter
 C Kondensator
 U< Mindestspannungrelais
 M, M1, M2, Motor
 PE Erdung
 L1, L2, L3 Versorgungsleitung

FR

I Interrupteur Marche / Arrêt
 C Condensateur
 U< Relais à tension mini,
 M, M1, M2, Moteur
 PE Mise à la terre
 L1, L2, L3 Ligne d'alimentation

ES

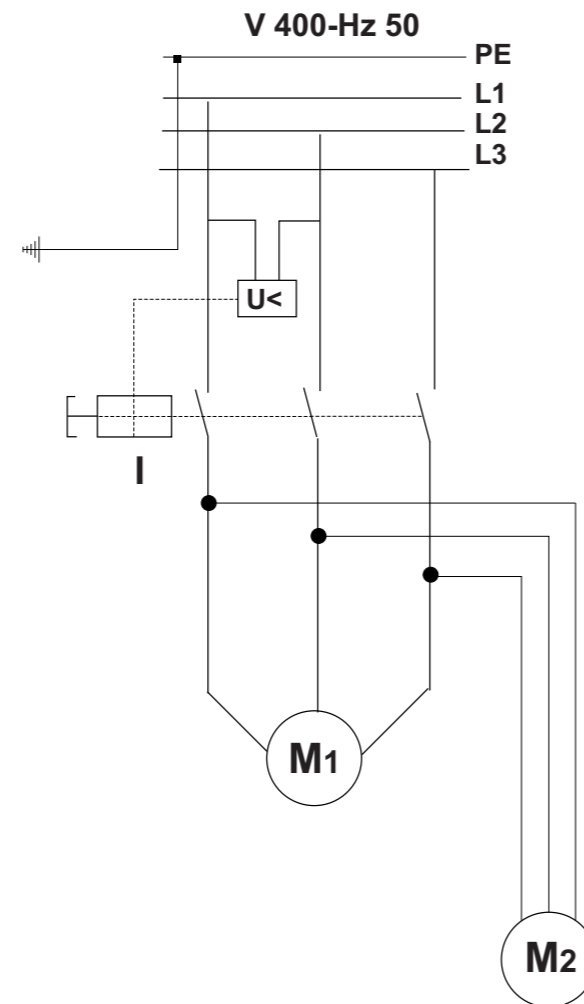
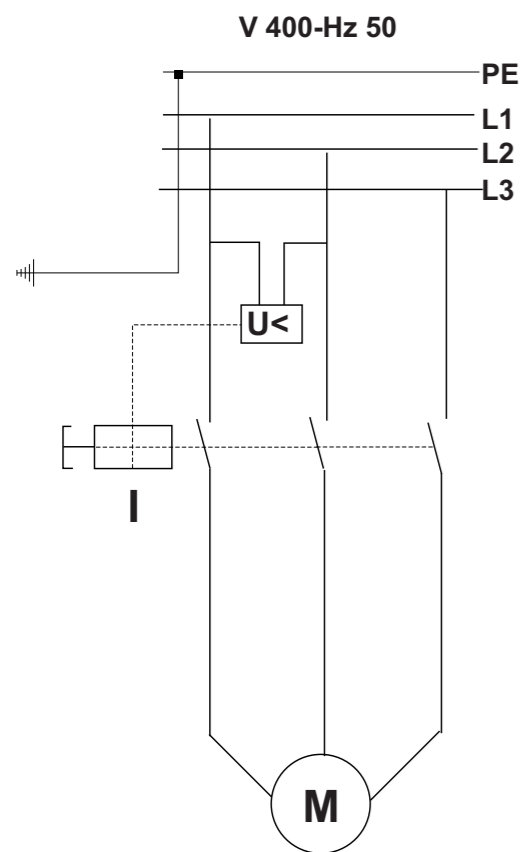
I Interruptor Iniciar/detener
 C Condensador
 U< Relé de tensión mínima
 M, M1, M2, Motor
 PE Toma de tierra
 L1, L2, L3 Línea de alimentación

PT

I Interruptor Start/Stop
 C Condensador
 U< Relé de mínima tensão
 M, M1, M2, Motor
 PE Ligação à terra
 L1, L2, L3 Linha de alimentação

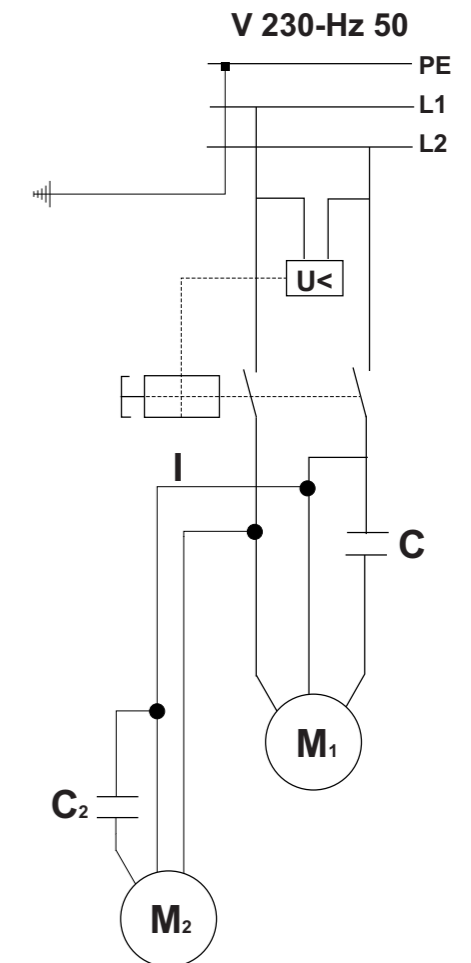
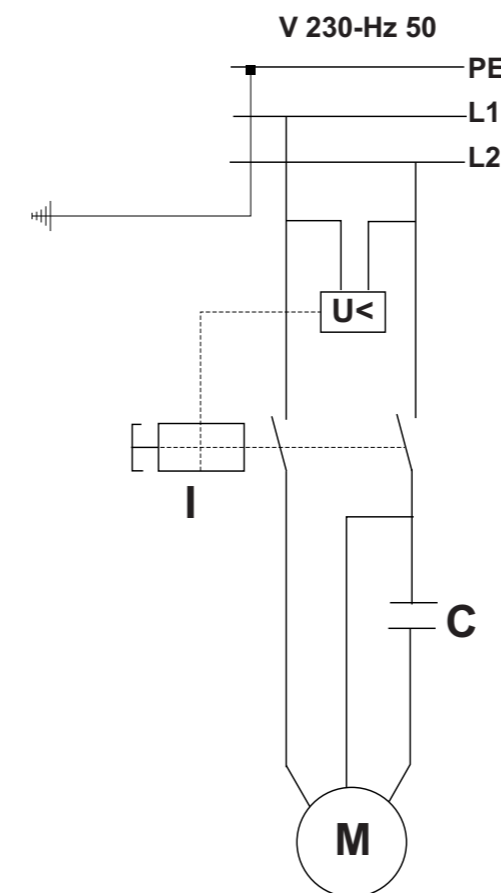
Art. 510

6951029 6951033



Art. 511

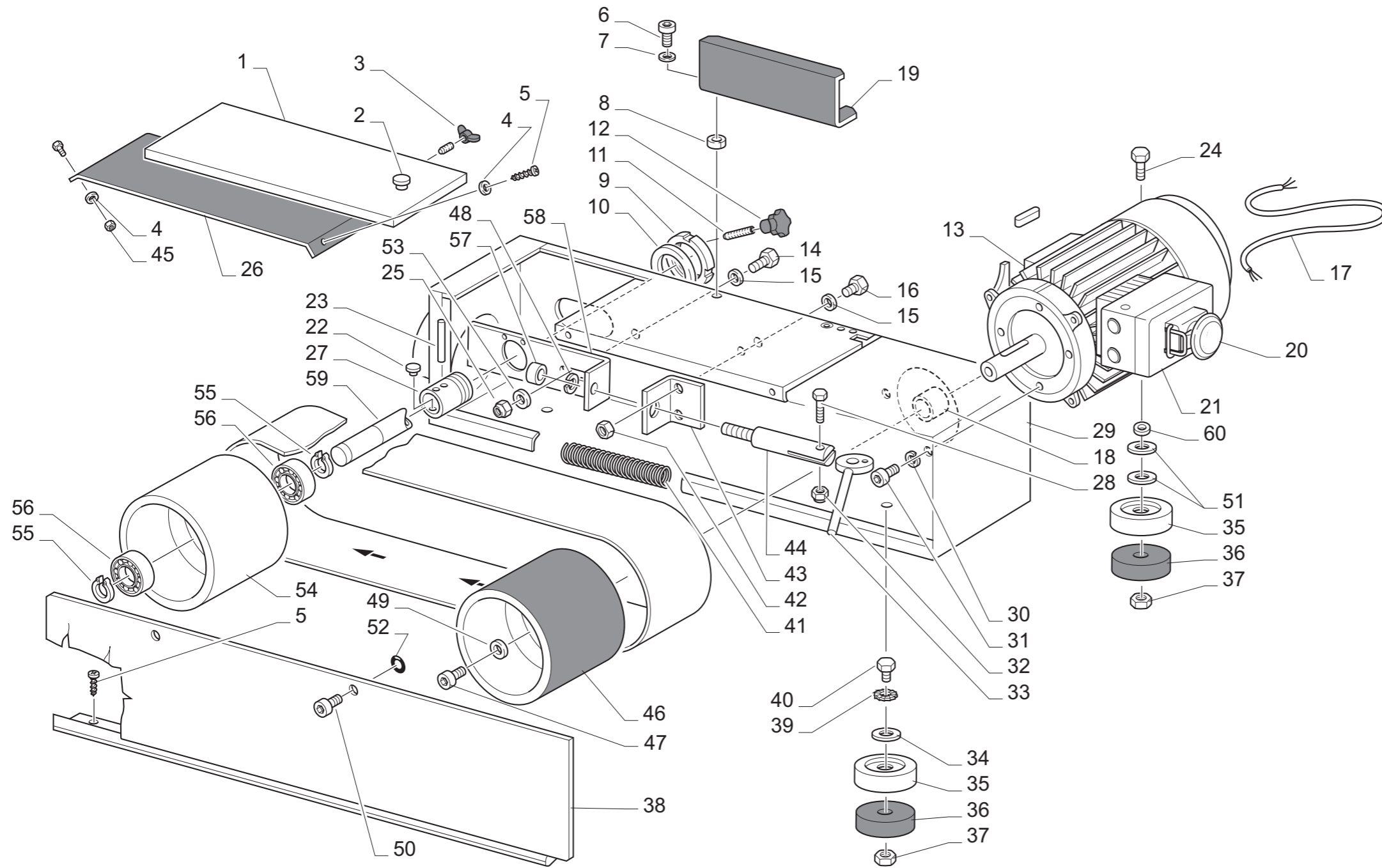
6951028 6951032



Art. 510 - 511

TAVOLE RICAMBI - SPARE PARTS - ERSATZTEILE - PIECES DE RECHANGE - REPUESTOS - PEÇAS DE MUDANÇA

NR. 1



POS.	COD./KOD.	NOTE/MERKE/NOTES/ NOTA/NOTAS
NR. 1		
1	5.18.17.20	
2	0.14.00.63	
3	0.10.70.02	
4	0.12.01.04	
5	0.42.06.62	
6	0.32.05.20	
7	0.12.01.05	
8	5.12.40.28	
9	0.10.61.25	
10	0.12.40.20	
11	0.41.05.40	
12	0.14.00.44	
13	7.80.18.12	art. 511
	7.80.18.13	art. 510
14	0.31.06.20	
15	0.12.01.06	
16	0.31.06.15	
17	5.87.10.33	art. 511
	5.87.10.42	art. 510
18	5.12.06.37	
19	5.13.03.72	
20	0.80.26.17	art. 511
	0.80.36.17	art. 510
21	5.18.28.61	
22	5.13.03.65	
23	0.15.26.40	
24	0.31.08.30	
25	0.10.11.06	
26	5.13.07.26	
27	5.13.07.06	
28	0.31.04.20	
29	5.13.78.98	
30	0.12.02.06	
31	0.32.06.12	
32	0.10.11.04	
33	5.14.20.21	
34	0.12.07.10	
35	5.04.10.05	
36	5.13.36.05	
37	0.10.01.10	
38	5.18.17.21	
39	0.12.03.10	
40	0.31.10.12	
41	5.08.01.13	
42	0.10.01.06	
43	5.13.77.64	
44	5.17.30.18	
45	0.10.01.04	
46	5.21.40.14	
47	0.32.08.20	
48	0.12.02.08	
49	0.12.90.02	
50	0.32.05.20	
51	0.12.40.29	
52	0.22.20.12	
53	0.12.08.06	
54	5.21.42.17	
55	0.15.11.15	
56	0.52.62.02	
57	0.10.01.08	
58	5.13.07.25	
59	5.00.20.53	
60	0.12.01.08	