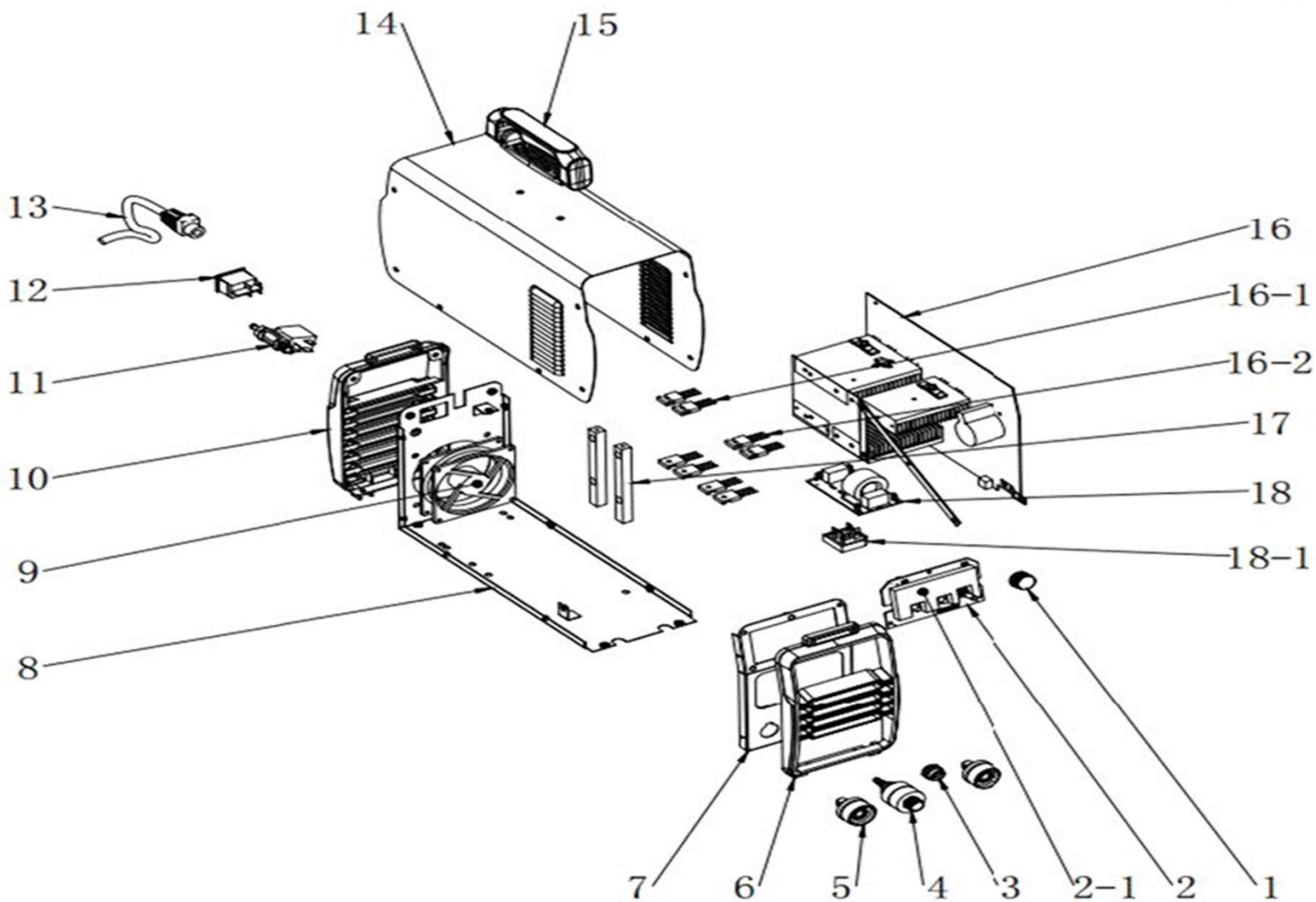


CE-TITANTIG220P





CE-TITAN220P



REFERENCIA	KIT	EN	ES	PT	FR
CE-TITAN220P-1		Knob	Potenciómetro	Potenciómetro	Potentiomètre
CE-TITAN220P-2	CE-TITAN220P-90	PCB Control Panel+LED	Circuito de regulación compolto	Circuito de regulação completo	Circuit complet de régulation
CE-TITAN220P-3		Two pins Aero Socket	Enchufe aire	Ficha de ar	Prise d'air
CE-TITAN220P-4		Shield Gas Connector	Enchufe gas	Ficha de gás	Bouchon de gaz
CE-TITAN220P-5		Positive Connector	Conector positivo	Conector positivo	Connecteur positif
CE-TITAN220P-6		Front Plastic Panel	Panel frontal	Painel frontal	Panneau
CE-TITAN220P-7		Front Metal Panel	Panel frontal metálico	Painel frontal metálico	Façade en métal
CE-TITAN220P-8		Metal Bottom Plate	Base	Base	Base
CE-TITAN220P-9		Fan	Ventilador	Ventilador	Éventail
CE-TITAN220P-10		Rear Plastic Panel	Panel trasero	Painel traseiro	Panneau arrière
CE-TITAN220P-11		Solenoid Valve	Electroválvula	Válvula solenoide	Électrovanne
CE-TITAN220P-12		Power Switch	Interruptor	Mudar	Interrupteur
CE-TITAN220P-13		Power Switch	Pasacables	Cabo	Câble
CE-TITAN220P-14		Machine Case	Carcasa central	Habitação central	Logement central
CE-TITAN220P-15		Handle	Manilla	Pega	Manche
CE-TITAN220P-16	CE-TITAN220P-99	Main Board	Placa completa	Prato Cheio	Assiette pleine
CE-TITAN220P-17		Bracket	Soporte plástico	Suporte de plástico	Support en plastique
CE-TITAN220P-18	CE-TITAN220P-19	PCB EMC board +RECTIFICADOR	EMB Placa	Placa EMB	Placa EMB