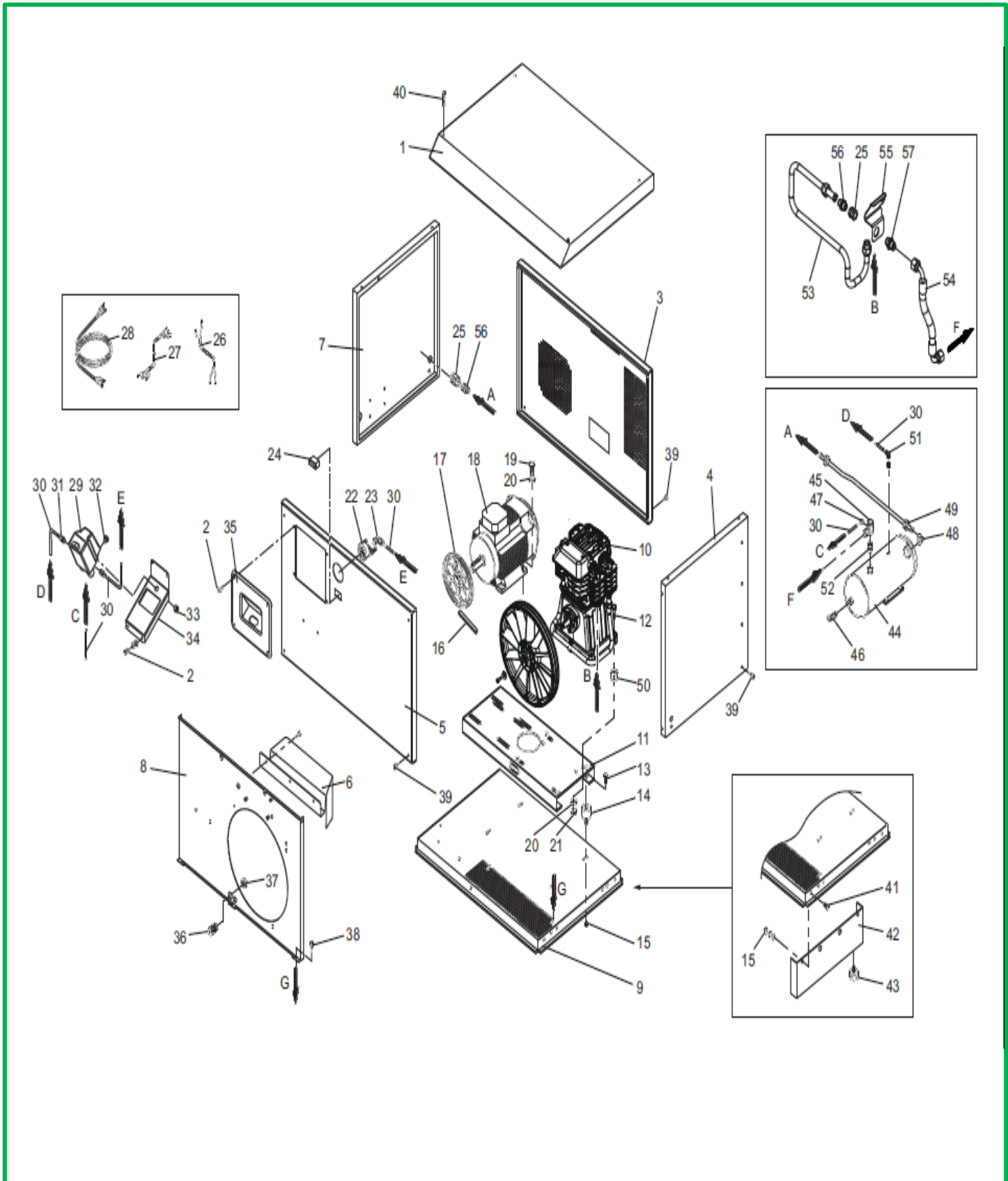
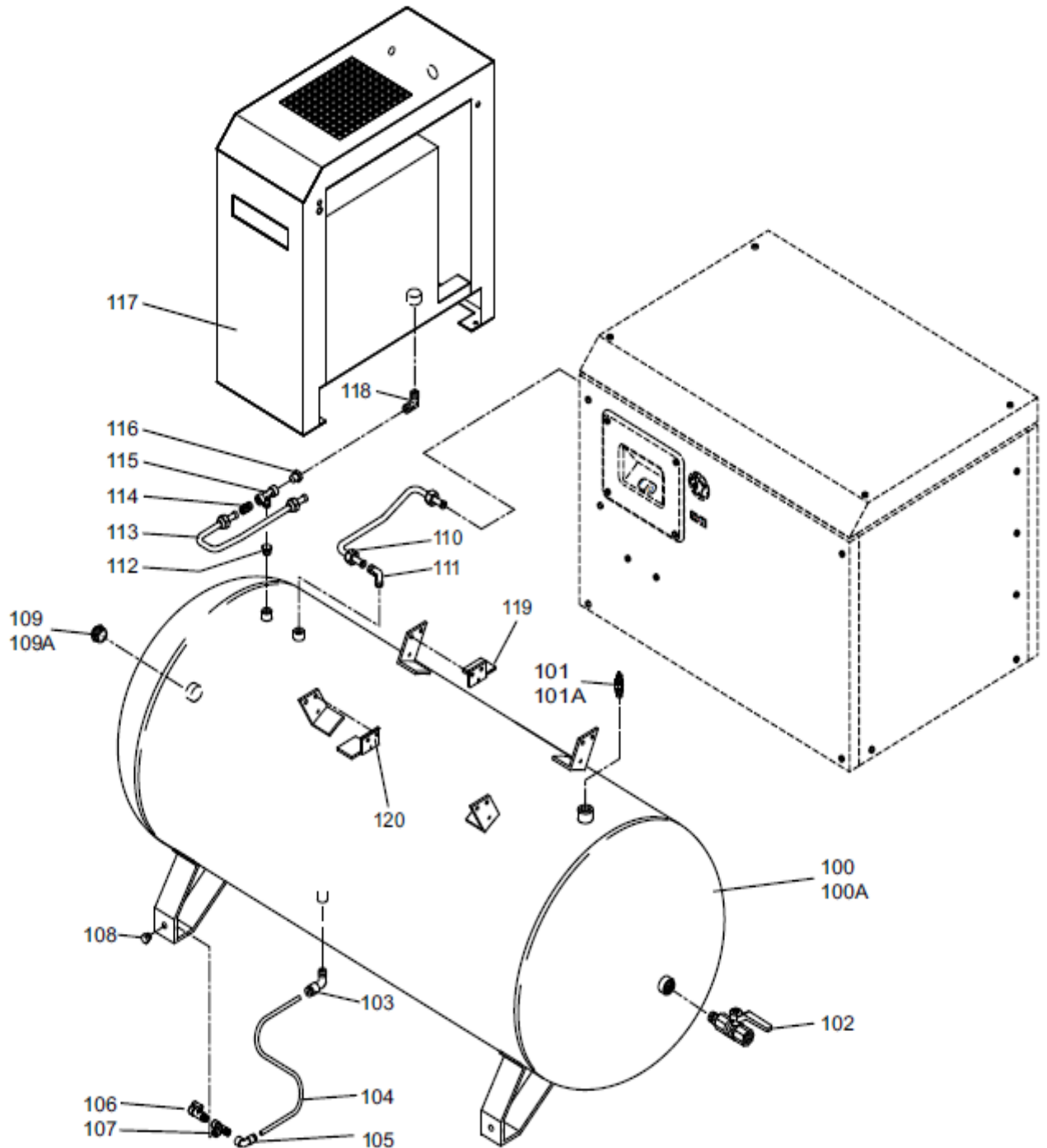


Referencia: **MCXD 988 500N**





Referencia: **MCXD 988 500N**



Referencia: **MCXD 988 500N**



REF.	CODE	QT	DESCRIPTION	DESCRIZIONE
RIF.	CODICE			
1	7517970000	1	Upper panel	Pannello superiore
2	7014420000	8	Screw	Vite M5X20 UNI-7380
3	x	1	Rear panel	Pannello posteriore
4	x	1	Right side panel	Pannello Dx
5	x	1	Front panel	Pannello anteriore
6	5162860008	1	Conveyor	Convogliatore
7	x	1	Left side panel	Pannello sx
8	5167350008	1	Internal panel	Pannello interno
9	5167360008	1	Base	Base
10	3021090000	1	Pump unit	Gruppo Pompante AB 998S
11	5167370008	1	Base	Base
12	7011980000	4	Screw	Vite M10X55 UNI-5739
13	7011080000	4	Screw	Vite M8X16 UNI-5739
14	7360340000	4	Rubber Foot	Piede in gomma
15	7020080000	4	Nut	Dado M10 UNI-5588
16	7370490000	1	Belt	Cinghia TRAP. A 62
17	7406360000	1	Pulley	Puleggia Øp150 2 GOLE A-F.28-C/BUSSOLA
18	7386180000	1	Three phase Motor	Motore Trifase
19	7011170000	4	Screw	Vite M10X35 UNI-5739
20	7030040000	8	Washer	Rondella Ø10 UNI-6592
21	7020080000	10	Nut	Dado M10 UNI-5588
22	7111030000	1	Pressure gauge	Manometro
23	7080890000	1	Joint	Raccordo "L" F1/4"-6 RAPIDO
24	7586190000	1	Hour meter	Contaore
25	7085700000	2	Joint	Raccordo 1/2"-1/2"FF
26	7326650000	1	Pressure switch/hour meter cable	Cavo Pressostato/Contaore
27	7328690000	1	Pres. switch/Motor cable	Cavo Pressostato / Motore
28	7328700000	1	Infeed cable	Cavo alimentazione
29	7251221000	1	Pressure switch	Pressostato
30	7234470000	1	Rilsan hose kit	Kit tubo rilsan
31	7084220000	2	Joint	Raccordo DIR. M1/4"-6 RAPIDO
32	7016070000	1	Plug	Tappo M1/4 TCEI
33	7090080000	1	Plug	Tappo M3/8"
34	7511530000	1	Bracket	Staffa pressostato
35	7155631000	1	Instruments support	Cruscotto
36	7500440000	1	Stretch eliminator	Pressacavo M20x1,5
37	7500440010	1	Locking nut	Controdado M20x1,5
38	7012240000	10	Screw	Vite M5X15 UNI-8112
39	7014450000	12	Screw	Vite M5X50 UNI-7380
40	7010500000	4	Screw	Vite M5X80 UNI-5931
41	7011210000	10	Screw	Vite M6X25 UNI-5739
42	5167430008	2	Compressor foot	Piede compressore
43	7360400000	4	Rubber Foot	Piede in gomma Ø70 - 60SH
44	5156280008	1	Tank	Serbatoio 2 Lt
45	7190150000	1	Non return valve	Valvola di ritegno FM 1/2"
46	7192010000	1	Safety valve	Valvola di Sic. M1/4-10,5Bar
47	7080780000	1	Joint	Raccordo "L" M1/8"-6 RAPIDO
48	7080160000	1	Joint	Raccordo "L" 1/2
49	7234530000	1	Infeed hose	Tubo alimentazione
50	7063160000	4	Spacer	Distanziale
51	6006380614	1	Joint	Raccordo "L" M-1/4x6
52	7081311150	1	Joint	Raccordo 1/2"X1/2"
53	7231850000	1	Infeed pipe	Tubo alimentazione
54	7236710000	1	Rubber hose	Tubo in gomma
55	7517970000	1	Support	Supporto
56	7081311150	2	Joint	Raccordo 1/2"X1/2"
57	7081280000	1	Joint	Raccordo 1/2"X1/2"

Referencia: **MCXD 988 500N**



REF.	CODE	QT	DESCRIPTION	
RIF.	CODICE		DESCRIZIONE	
100	7475980000	1	Tank 270 lt	Serbatoio 270 lt.
100A	7476020000	1	Tank 500 lt	Serbatoio 500Lt
101	7192010000	1	Safety valve	Valvola di Sic. M1/4-10,5Bar
101A	7192090000	1	Safety valve	Valvola di Sic. 3/8"10,4BAR
102	7130150000	1	Tap	Rubinetto a Sfera MF 1/2"
103	7082820000	1	Joint	Raccordo "L" M3/8"-8 RAPIDO
104	7230080000	1	Rilsan hose	Tubo Rilsan Ø8X6
105	7080970000	1	Joint	Raccordo "L" M1/4"-8 RAPIDO
106	7130170000	1	Tap	Rubinetto a Sfera MF 1/4"
107	7082050000	1	Joint	Raccordo "T" 1/4 FFM
108	7090090000	1	Plug	Tappo M1/4" Ottone
109	7090030000	1	Plug	Tappo M1/2"
109A	7090050000	1	Plug	Tappo M2"
110	7239220000	1	Infeed hose	Tubo alimentazione
111	7080180000	2	Joint	Raccordo "L" 1/2
112	7085020000	1	Joint	Raccordo 1/2"-3/8"MF
113	7239300000	1	Copper hose	Tubo in rame
114	7081250000	1	Joint	Raccordo 3/8"X1/2"
115	6002550038	1	Joint	Raccordo T 3/8" FFM
116	7090080000	1	Plug	Tappo M3/8"
117	x	1	Dryer	Essiccatore
118	7080180000	1	Joint	Raccordo "L" 1/2
119	5184600008	1	Dryer Support	Staffa essiccatore DX
120	5184610008	1	Dryer Support	Staffa essiccatore SX