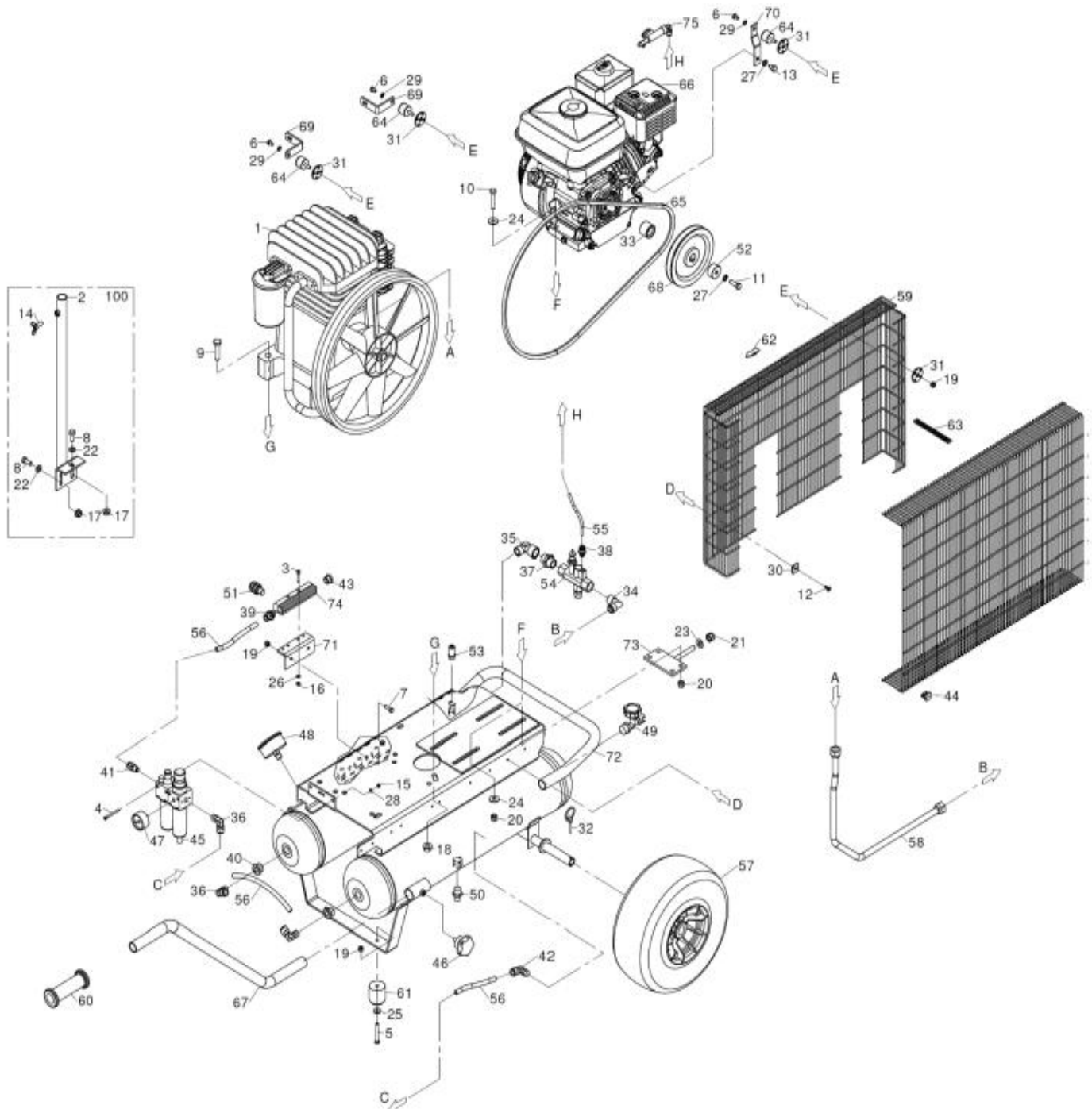


Referencia: CA- AGRI65



Referencia: CA- AGRI65



REF. RIF.	CODE CODICE	QT	DESCRIPTION DESCRIZIONE	REF. RIF.	CODE CODICE	QT	DESCRIPTION DESCRIZIONE
1	3021070000	1	Unit pump <i>Gruppo pompante</i>	41	7084410000	1	Joint <i>Racc 1/4 tubo 10</i>
2	5185800008	1	Hose rill suport <i>Asta supp. Arrtololat.</i>	42	7084250000	1	Joint <i>Racc L 3/8 tubo 10</i>
3	7010320000	2	Screw <i>Vite 5x25</i>	43	7090080000	1	Plug <i>Tappo 3/8</i>
4	7010380000	2	Screw <i>Vite TCEI M4x45</i>	44	7092010000	10	Belt guard Blocker <i>Tassello paracinghia</i>
5	7011010000	2	Screw <i>Vite TE M6x50</i>	45	7100780000	1	FRL group <i>Gruppo FRL</i>
6	7011030000	3	Screw <i>Vite TE M6x10</i>	46	7101640000	2	Knob <i>Pomello</i>
7	7011040000	2	Screw <i>Vite TE M6x20</i>	47	7110240000	1	Pressure gauge <i>Manometro</i>
8	7011090000	3	Screw <i>Vite TE M8x20</i>	48	7110140000	1	Pressure gauge <i>Manometro</i>
9	7011120000	4	Screw <i>Vite TE M10x45</i>	49	7130080000	1	Tap <i>Rubinetto</i>
10	7011310000	4	Screw <i>Vite TE M8x45</i>	50	7130180000	2	Discharge tap <i>Rubinetto di spurgo</i>
11	7011970000	1	Screw <i>Vite TE 5/16 x25</i>	51	7130570000	3	Universal Tap <i>Rubinetto rap. Universale</i>
12	7012090000	5	Screw <i>Vite trilob. M5x12</i>	52	7152570000	1	S20 Washer <i>Rondella x S20</i>
13	7012870000	1	Screw <i>Vite TE M8x12</i>	53	7192010000	1	Safety Valve <i>Valvola di sicurezza</i>
14	7014100000	1	Screw <i>Vite ad alette M8x20</i>	54	7195170000	1	Autom. unloading valve <i>Disgiuntore 1/2</i>
15	7020040000	2	Nut <i>Dado M4</i>	55	7230010000	1	Rilsan hose <i>Tubo rilsan Ø6</i>
16	7020050000	2	Nut <i>Dado M5</i>	56	7230030000	2	Rilsan hose <i>Tubo rilsan Ø10</i>
17	7020240000	3	Nut <i>Dado M8 c/flanga</i>	57	7280310000	2	Wheel <i>Ruota</i>
18	7020250000	4	Nut <i>Dado M10 c/flanga</i>	58	7233081000	1	Infeed hose <i>Tubo alimentazione</i>
19	7021010000	7	Nut <i>Dado M6 autob.</i>	59	7240590000	1	Belt guard <i>Paracinghia</i>
20	7021030000	4	Nut <i>Dado M8 autob.</i>	60	7280030000	2	Handle <i>Manopola</i>
21	7021050000	1	Nut <i>Dado M10 autob.</i>	61	7380080000	2	Rubber <i>Gommino</i>
22	7030030000	3	Washer <i>Rondella Ø8</i>	62	7381010000	1	Directional arrow <i>Freccia direzione</i>
23	7030040000	1	Washer <i>Rondella Ø10</i>	63	7381050000	2	Belt guard spacer <i>Distanziale paracinghia</i>
24	7038020000	6	Washer <i>Rondella Ø8x30</i>	64	7384180000	3	Shock absorber <i>Antivibrante</i>
25	7030190000	2	Washer <i>Rondella Ø6x18</i>	65	7371320000	1	Belt <i>Cinghia SPZ 1462</i>
26	7030330000	2	Washer <i>Rondella Ø5 dent.</i>	66	7385210000	1	Petrol Engine <i>Motore a scoppio</i>
27	7031010000	2	Washer <i>Rondella Ø8 dent.</i>	67	7398640000	2	Handle <i>Manico</i>
28	7031020000	2	Washer <i>Rondella Ø4 dent.</i>	68	7405310000	1	Pulley <i>Puleggia</i>
29	7031030000	3	Washer <i>Rondella Ø6 dent.</i>	69	7458410000	2	Suport <i>Staffa gruppo AB550</i>
30	7031230000	5	Belt guard Washer <i>Rondella paracinghia</i>	70	7458420000	1	Suport <i>Staffa motore</i>
31	7038080000	6	Fan Washer <i>Rondella ventola ccs</i>	71	7459200000	1	Suport <i>Supporto</i>
32	7040190000	2	Pin <i>Spinotto a scatto</i>	72	5151890008	1	Tank <i>Serbatoio</i>
33	7082680000	1	Bush <i>Boccola S24</i>	73	7511320000	1	Belt tensioner <i>Piastra tendicinghia</i>
34	7080160000	1	Joint <i>Raccordo a L</i>	74	7517330000	1	Mainfold <i>Ripartitore</i>
35	7080770000	1	Joint <i>Raccordo a L 1/2"</i>	75	8102380000	1	Pneum. acelerator <i>Acceleratore pneumatico</i>
36	7081000000	3	Joint <i>Raccordo a L 1/4 tubo 10</i>				
37	7081170000	1	Joint <i>Niplo 1/2</i>				
38	7084270000	1	Joint <i>Racc. 1/8 tubo 6</i>	100	4083650000	1	Hose rill kit <i>Kit arrotola tubo</i>
39	7084280000	1	Joint <i>Racc. 3/8 tubo 10</i>				
40	7085080000	2	Joint <i>Rid. MF 1/2x1/4</i>				