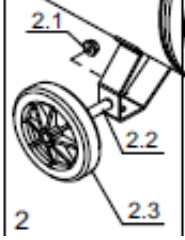
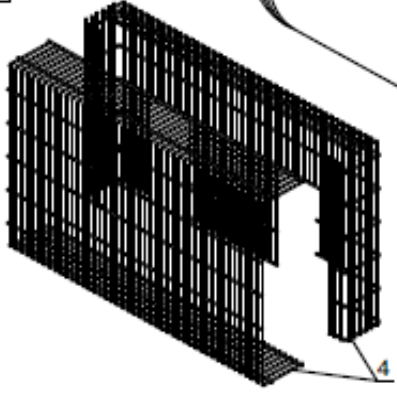
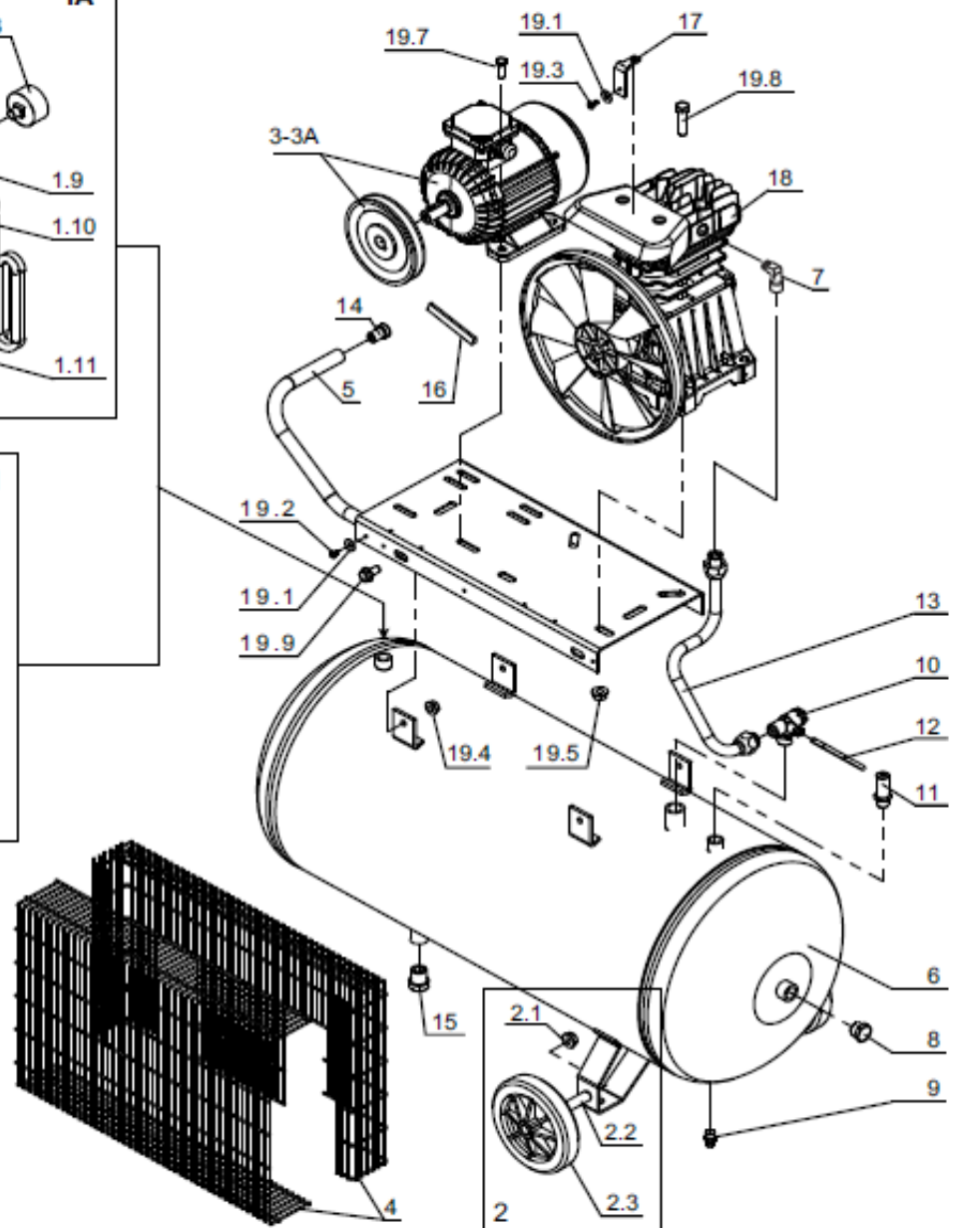
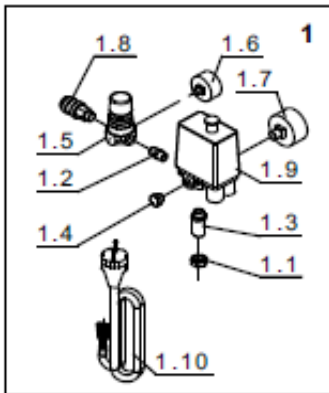
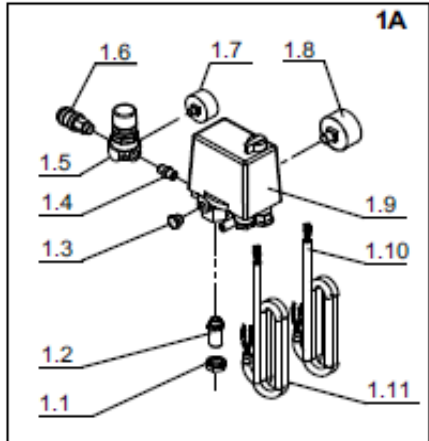




Referencia: **PTK100/2M**



Referencia: **PTK100/2M**



REF. RIF.	CODE CODICE	QT	DESCRIPTION DESCRIZIONE
1	4054720000	1	Press. Switch kit <i>Kit Pressostato AB100-268M</i>
1.1	7023050000	1	Locking nut <i>Controdado 3/8"</i>
1.2	7081090000	1	Joint <i>Raccordo 1/4" MM</i>
1.3	7088060000	1	Joint <i>Raccordo MM 3/8-1/4 CIL 3/8</i>
1.4	7090090000	1	Plug <i>Tappo M1/4" Ottone</i>
1.5	7100640000	1	Pressure reducer <i>Riduttore di pressione</i>
1.6	7110240000	1	Pressure gauge <i>Manometro Ø40-1/8"</i>
1.7	7110300000	1	Pressure gauge <i>Manometro Ø50-1/4"</i>
1.8	7130570000	1	Universal Tap <i>Rubinetto universale M1/4"</i>
1.9	7250740000	1	Pressure switch <i>Pressostato</i>
1.10	7329070000	1	Infeed cable <i>Cavo alimentazione</i>
1A	4054500000	1	Press. Switch kit <i>Kit Pressostato AB100-268T</i>
1.1	7023050000	1	Locking nut <i>Controdado 3/8"</i>
1.2	7081090000	1	Joint <i>Raccordo 1/4" MM</i>
1.3	7088060000	1	Joint <i>Raccordo MM 3/8-1/4 CIL 3/8</i>
1.4	7090090000	1	Plug <i>Tappo M1/4" Ottone</i>
1.5	7100640000	1	Pressure reducer <i>Riduttore di pressione</i>
1.6	7110240000	1	Pressure gauge <i>Manometro Ø40-1/8"</i>
1.7	7110300000	1	Pressure gauge <i>Manometro Ø50-1/4"</i>
1.8	7130570000	1	Universal Tap <i>Rubinetto universale M1/4"</i>
1.9	7250740000	1	Pressure switch <i>Pressostato</i>
1.10	7329070000	1	Infeed cable <i>Cavo alimentazione</i>
1,11	7328020000	1	Infeed cable <i>Cavo alimentazione</i>
2	4083010000	1	Wheel kit <i>Kit ruota</i>
2.1	x	2	Nut <i>Dado M10 DIN-6923</i>
2.2	x	2	Wheel pin <i>Perno ruota</i>
2.3	x	2	Wheel <i>Ruota Ø150X30 F15</i>
3	4150820000	1	Motor/pulley kit <i>Kit motore/puleggia V 230/1</i>
3A	4150990000	1	Motor/pulley kit <i>Kit motore/puleggia V 400/3</i>

Referencia: **PTK100/2M**



REF. RIF.	CODE CODICE	QT	DESCRIPTION DESCRIZIONE
4	4170160000	1	Belt guard kit <i>Kit paracinghia</i>
5	5010990008	1	Base <i>Base</i>
6	5159780008	1	Tank <i>Serbatoio 100lt</i>
7	7080160000	1	Joint <i>Raccordo "L" 1/2</i>
8	7090030000	2	Plug <i>Tappo M1/2"</i>
9	7130160000	1	Discharge tap <i>Rubinetto spurgo M3/8"</i>
10	7190090000	1	Non return valve <i>Valvola di ritegno MM 1/2"-DX</i>
11	7192090000	1	Safety valve <i>Valvola di sic. 3/8"10,4BAR</i>
12	7230010000	0	Rilsan hose <i>Tubo Rilsan Ø6X4</i>
13	7231680000	1	Infeed hose <i>Tubo alimentazione</i>
14	7360020000	1	Rubber <i>Gommino Ø16</i>
15	7360040000	1	Rubber <i>Gommino Ø22</i>
16	7370300000	1	Belt <i>Cinghia TRAP. A 44</i>
17	7458510000	1	Belt guard Support <i>Staffa paracinghia</i>
18	9110930000	1	Pump AB268 <i>Gruppo comp. AB268</i>
19	4080500000	1	Screw kit <i>Kit Viti</i>
19.1	x	3	Washer <i>Rondella Ø6X24 UNI-6593</i>
19.2	x	3	Screw <i>Vite M5X12 UNI-8112</i>
19.3	x	1	Screw <i>Vite M5X8 UNI-8112</i>
19.4	x	4	Nut <i>Dado M8 DIN-6923</i>
19.4	x	4	Nut <i>Dado M8 DIN-6923</i>
19.7	x	4	Screw <i>Vite M10X20 DIN-6921</i>
19.8	x	4	Screw <i>Vite M10X45 UNI-5739</i>
19.9	x	4	Screw <i>Vite M8X25 UNI-5739</i>