

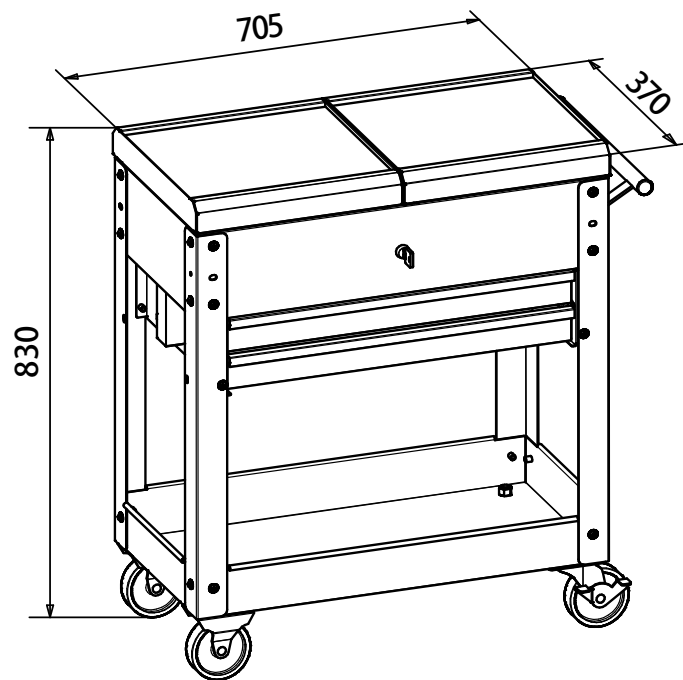


Code 192780

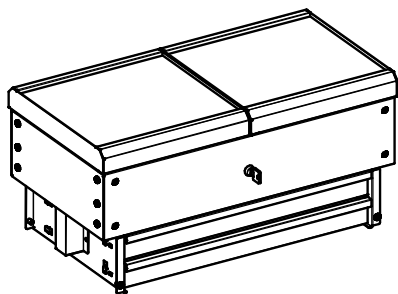
**CARRO DE TALLER
DE APERTURA SUPERIOR
SLIDING TOP TOOL CART**

Manual de instrucciones
Assembly instructions

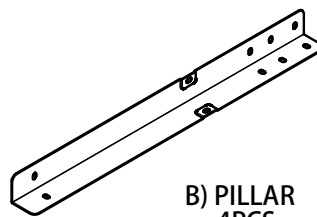




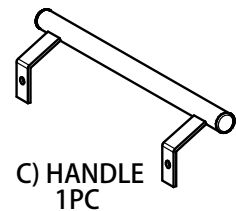
PARTS LIST



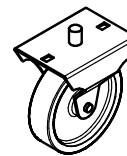
A) UPPER TRAY WITH 2 RUBBER LINERS
1PC



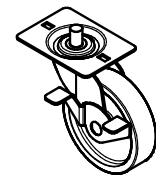
B) PILLAR
4PCS



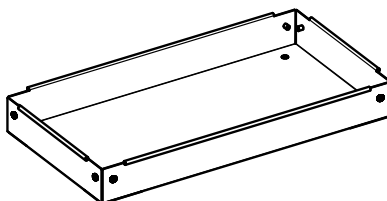
C) HANDLE
1PC



E) RIGID CASTER
2PCS



F) SWIVEL CASTER
2PCS



D) BOTTOM TRAY
1PC



G) BOLT M6X12
(30+2)PCS



H) NUT M12
4PCS

ATENCIÓN • ATTENTION:

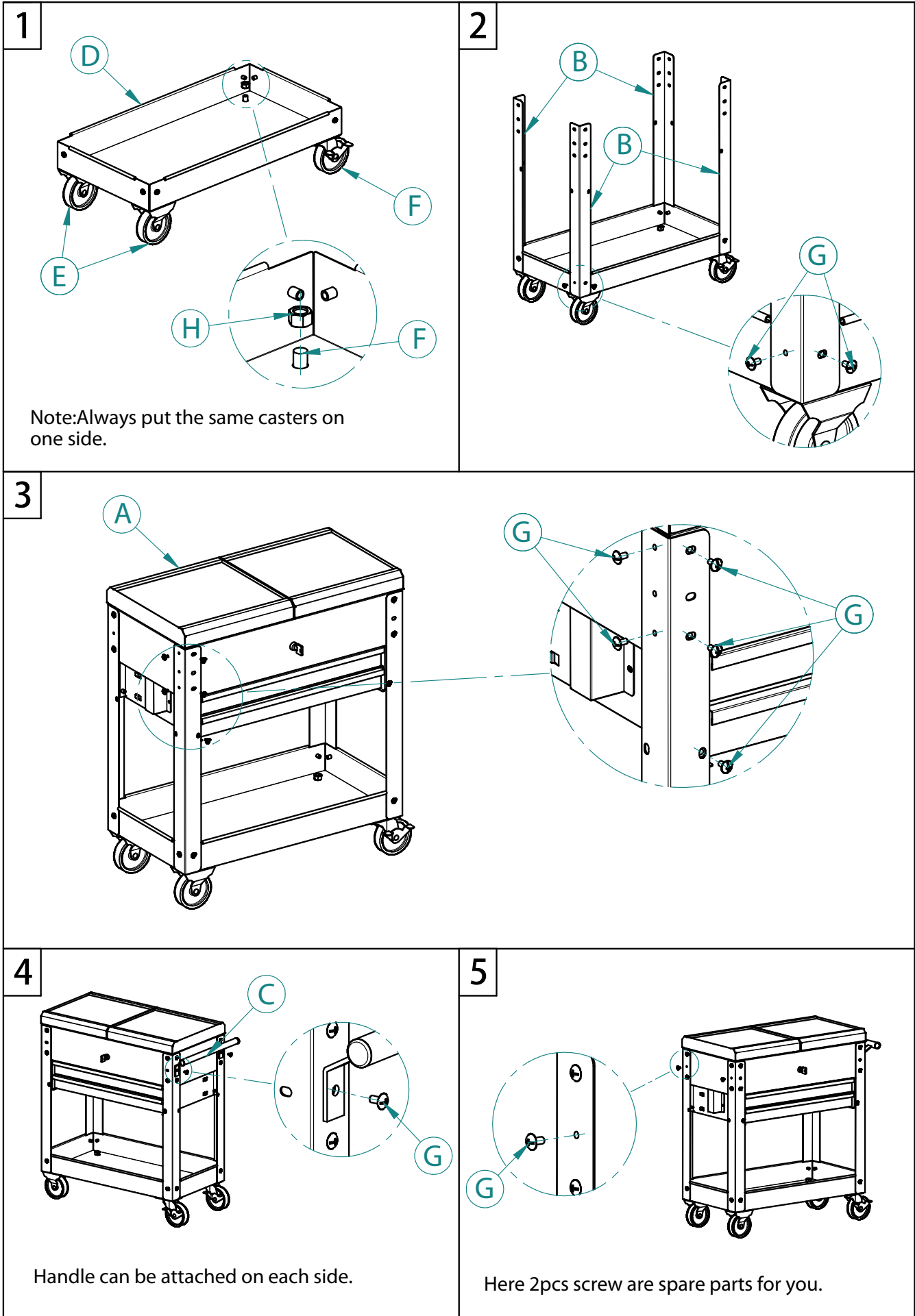
1. Antes de de abrir los cajones, primero debe abrir la tapa deslizable. El paso contrario ha de hacerse para cerrar los cajones.
1. *Before open the drawer, you may first open the sliding tops. And the inverse step is necessary when locking the drawer.*

2. No se puede abrir mas de un cajón a la vez o el carro podría volcar. Antes de abrir un cajón, asegurese que el otro cajon este perfectamente cerrado.
2. *Only one drawer can be pull out at one time, or the cart may tip. Before pull out one drawer, make sure the other one has been pushed fully in.*

3. No colocar carga pesada encima de un cajón cuando esté abierto, podría volcar el carro.
3. *Don't put heavy load on the drawer when it's open. The cart may tip.*

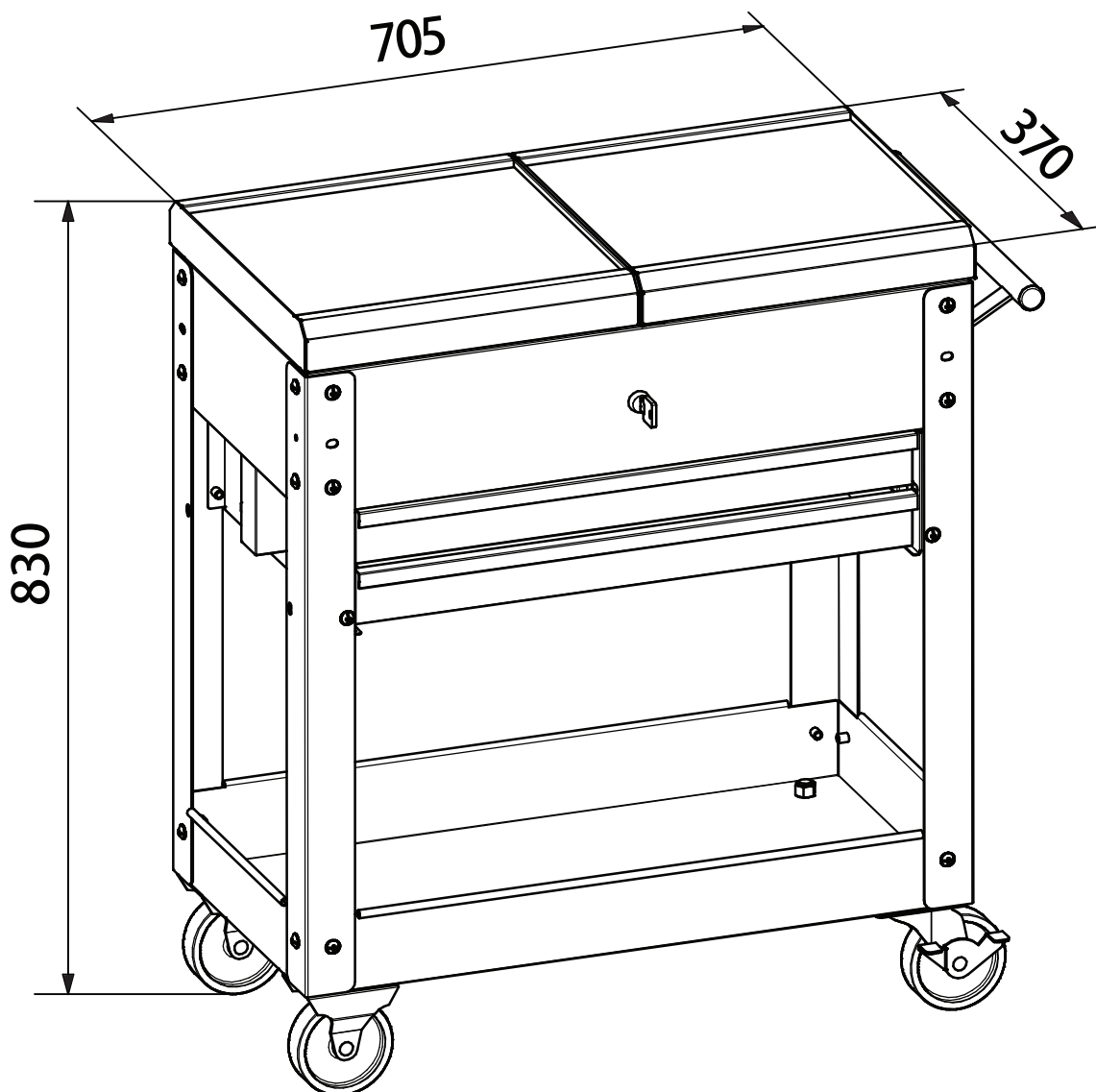
4. La carga de cada cajón es de 8 kgs, la carga de la bandeja superior es 40 kgs, carga de la bandeja inferior es 40 kgs, carga total 100 kgs. Nunca exceder la capacidad total de carga por riesgo a que el carro se dañe.

4. *Each drawer load is 8kg, upper tray load is 40kg, bottom tray load is 40kg, total load is 100kg. Never exceed the load capacity or the product may be damaged.*



MEDIDAS • DIMENSIONS

ALYCO



CUADRO GENERAL DE MEDIDAS • OVERALL DIMENSIONS CHART	
Medida sin ruedas • Overall size without casters	705 x 370 x 710 mm
Medida con ruedas • Overall size with casters	705 x 370 x 830 mm
Medida embalaje • Package size	785 x 440 x 425 mm
Medida 2 cajones • 2 drawers size	587 x 325 x 60 mm
Peso Neto • Net weight	26,7 kgs
Peso Bruto • Gross weight	28,5 kgs