

Operator name and signature: CR _____

Output:	4136 lm
Peak:	1685 cd
Lux@50cm:	6740 Lux
Power:	28,5 W
Power Factor / DF	0,9
Standby power	0,44 W

Light efficacy:

145 Lumen/Watt

Light quality:

CRI: 83,3

Color temperature:

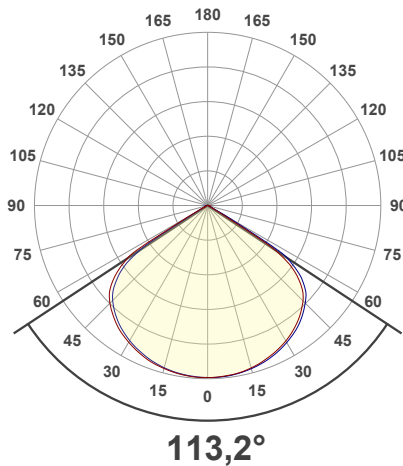
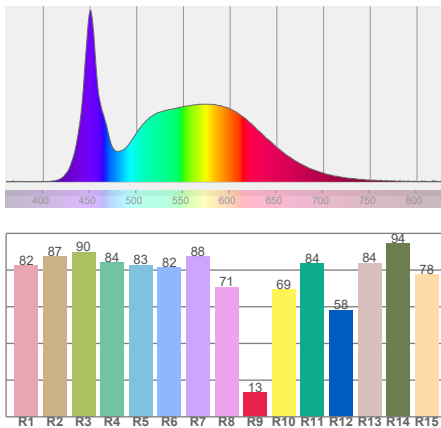
5649 K



According to regulation (EU) 2019/2015

Directionality:	Directional
Power (Pon)	22,78 W
Useful Lumen:	4291 lm
η_{TM} - Efficacy	222 lm/W
Energy Class:	A

Spectra



Product name:
NOVA 4 FOR LIFE - 100P

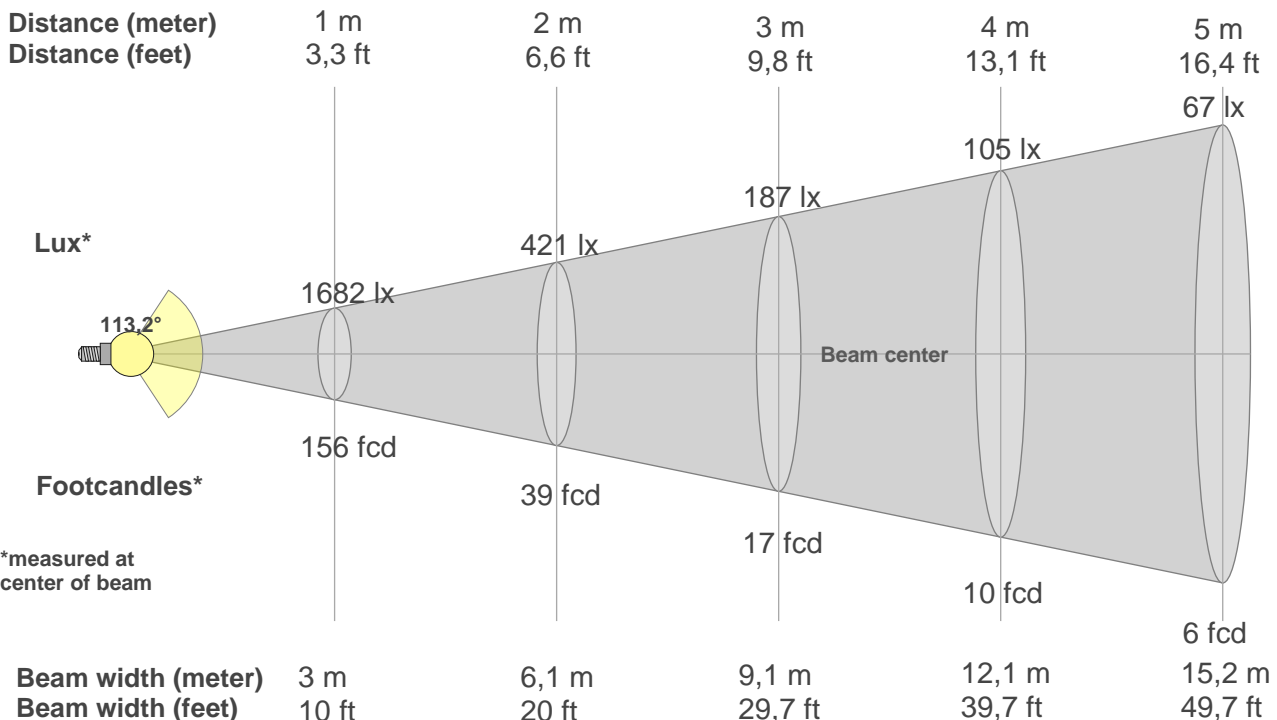
Item number:
03.6203

Date and time:
18-06-2024 14:31:13

Description:
Standby Power: 0,44 W
Sensor distance: 300 cm
Warm-up: <2% over 15 minutes
Power supply: 230 V AC
Pon[W]: 22,78
T2, 5700K #1, HW 2.0.0

BEAM DETAILS

Beam distance: 82 meters



Beam intensities from 1-20m

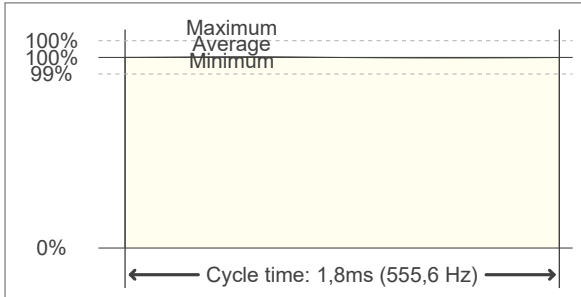
1m	2m	3m	4m	5m	6m	7m	8m	9m	10m	11m	12m	13m	14m	15m	16m	17m	18m	19m	20m
3,3ft	6,6ft	9,8ft	13,1ft	16,4ft	19,7ft	23ft	26,2ft	29,5ft	32,8ft	36,1ft	39,4ft	42,7ft	45,9ft	49,2ft	52,5ft	55,8ft	59,1ft	62,3ft	65,6ft
1682lx	421lx	187lx	105lx	67lx	47lx	34lx	26lx	21lx	17lx	14lx	12lx	10lx	9lx	7lx	7lx	6lx	5lx	5lx	4lx
156,3fc	39,1fcd	17,4fcd	9,8fcd	6,3fcd	4,3fcd	3,2fcd	2,4fcd	1,9fcd	1,6fcd	1,3fcd	1,1fcd	0,9fcd	0,8fcd	0,7fcd	0,6fcd	0,5fcd	0,5fcd	0,4fcd	0,4fcd

FLICKER DETAILS

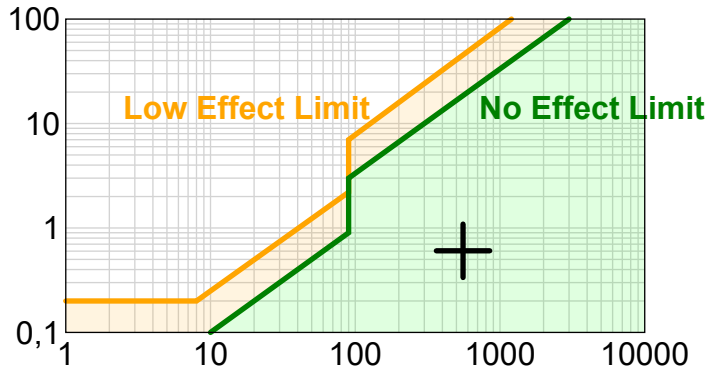
Flicker curve (complete sampled flicker signal)



Flicker frame (frame of one flicker period)

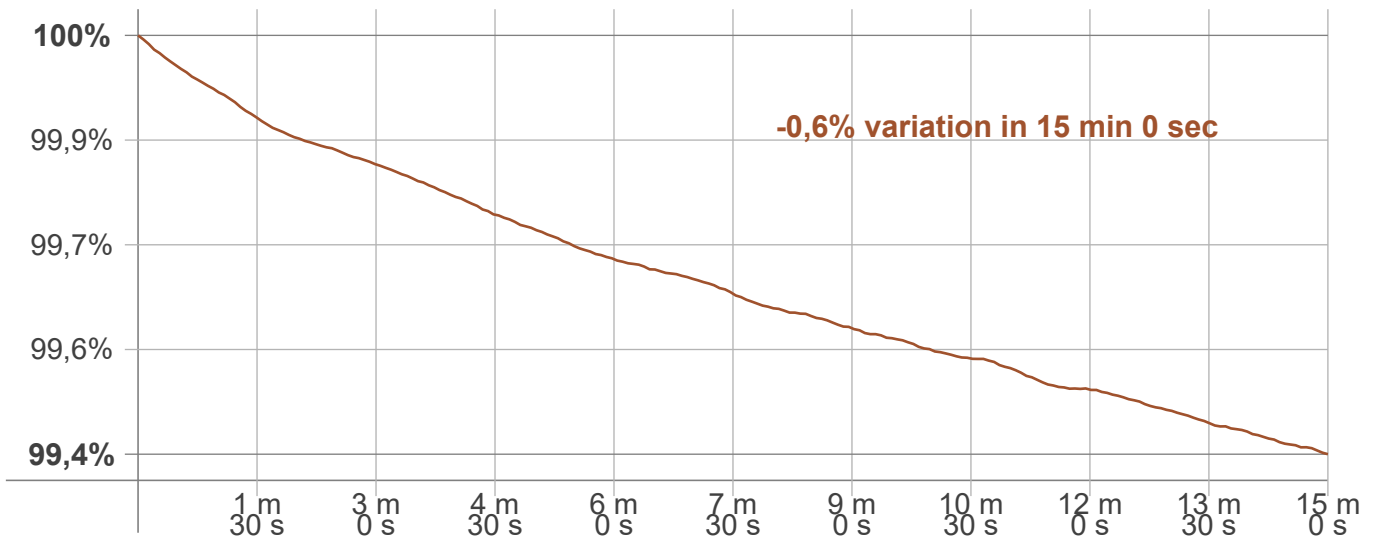


Flicker frequency:	555,56 Hz
Flicker index:	0
Flicker percentage:	0,6 %
SVM: (Visual flicker)	0,01
Pst LM:	0,16
SDCM	1,0
Rated Color Temperature	5700 K
Duv	0,0027
CIE Coordinates (x, y)	0,329, 0,339
CIE Coordinates (u, v)	0,205, 0,317



Flicker IEEE 1789

WARMUP DETAILS according to EN 13032-1



Percent of luminous flux output