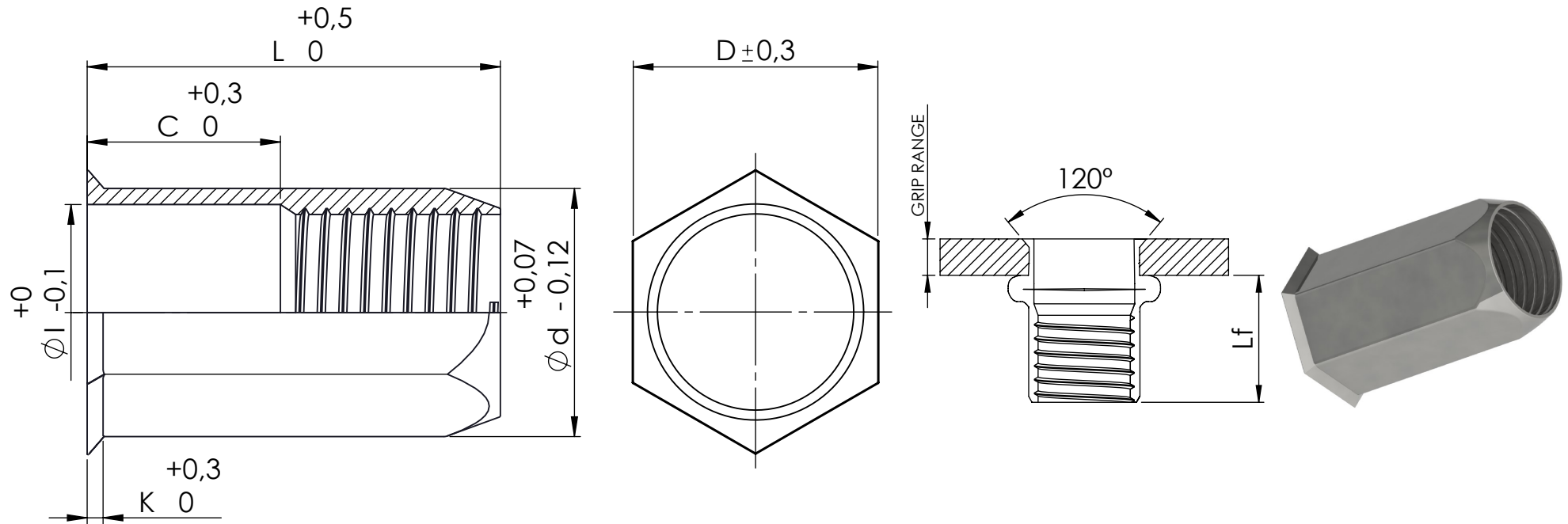


CODE NO.	THREAD	GRIP RANGE	DRILL	d	D	K	L	I	C	Lf	TENSILE(KN)	TORQUE (Nm)
TR04120TSOHS	M4-P0,7	0,5-3,0	H6,1	H5,9	H7,0	0,60	12,00	4,90	5,20	7,80	6,80	3,00
TR05135TSOHS	M5-P0,8	0,5-3,0	H7,1	H6,9	H8,0	0,60	13,50	5,90	6,20	8,80	10,00	6,00
TR06160TSOHS	M6-P1,0	0,5-3,0	H9,1	H8,9	H10,0	0,70	16,00	7,90	6,70	10,00	15,00	10,00
TR06160TSOHS	M6-P1,0	4,0-6,0	H9,1	H8,9	H10,0	0,70	18,50	7,90	6,70	10,00	15,00	10,00
TR08180TSOHS	M8-P1,25	0,5-3,0	H11,1	H10,9	H12,0	0,70	18,00	9,90	7,20	11,80	27,00	24,00
TR08205TSOHS	M8-P1,25	4,0-6,0	H11,1	H10,9	H12,0	0,70	20,50	9,90	7,20	11,80	27,00	24,00
TR10220TSOHS	M10-P1,5	1,0-4,0	H13,1	H12,9	H14,0	0,80	22,00	11,90	9,00	14,50	37,00	48,00
TR10245TSOHS	M10-P1,5	3,0-6,0	H13,1	H12,9	H14,0	0,80	24,50	11,90	9,00	14,50	37,00	48,00



Este plano es propiedad de Remaches Tudela S.L. todos los derechos reservados/ This drawing is property of Remaches Tudela S.L. all rights reserved

DIBUJADO / DRAWN BY FECHA / DATE	J.SANZ 15/11/2021	DENOMINACIÓN DESCRIPTION	TUERCA REM. ACERO C.REDCIDA HEXAGONAL ABIERTA / RIVET NUT REDUCED HEAD STEEL BODY HEX. OPEN-END	ESPECIFICACIONES GENERALES GENERAL SPECIFICATIONS
REVISIÓN / REVISION FECHA / DATE	Rev. 0 15/11/2021	MATERIAL MATERIAL	ACERO 1008 / STEEL 1008	TOLERANCIAS TOLERANCES
		ACABADO FINISHED	CINCADO / ZINC PLATED	Según plano/ According drawing
		REFERENCIA REFERENCE	TSOHS	UNIDADES UNITS
				mm
				⊕
				A4