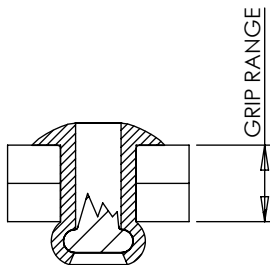
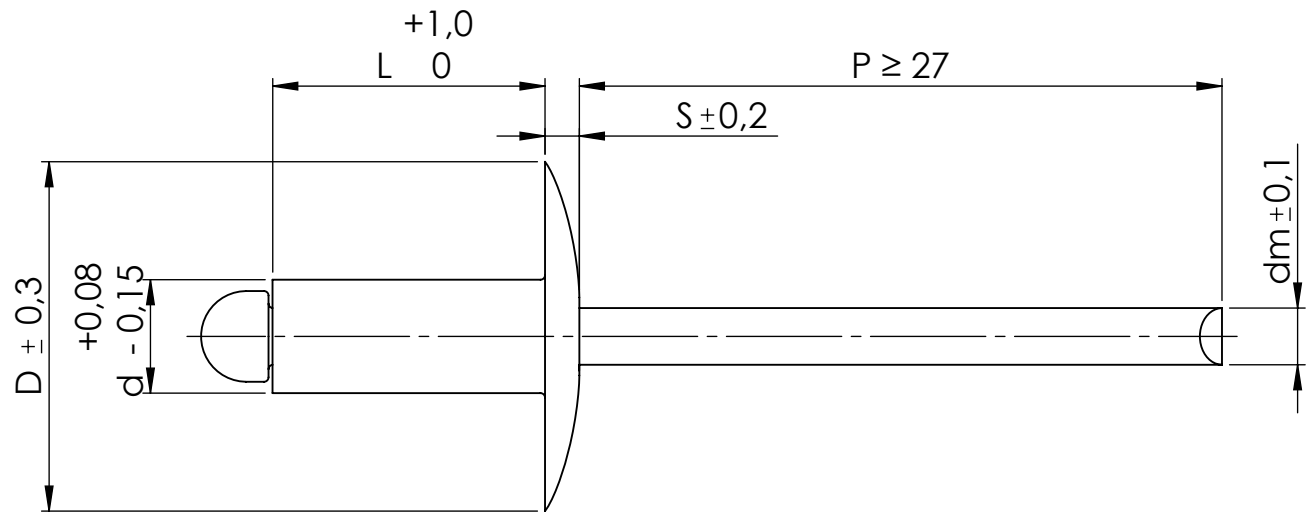


| d(mm) | Part No. | L(mm) | Grip Range(mm) | | Drill Size (mm) | D(mm) | S(mm) | dm(mm) | P(mm) | Tracción Tensile (N) | Cizalla Shear (N) |
|-------|----------|-------|----------------|------|-----------------|-------|-------|--------|-------|----------------------|-------------------|
| | | | Min | Max | | | | | | | |
| d=4,8 | R0434908 | 8 | 2,5 | 4,0 | 4,9 | 15,7 | 1,8 | 2,63 | 27 | 2230 | 1690 |
| | R0434910 | 10 | 4,0 | 6,0 | | | | | | | |
| | R0434912 | 12 | 6,0 | 8,0 | | | | | | | |
| | R0434914 | 14 | 8,0 | 10,0 | | | | | | | |
| | R0434916 | 16 | 10,0 | 12,0 | | | | | | | |
| | R0434918 | 18 | 12,0 | 14,0 | | | | | | | |
| | R0434920 | 20 | 13,0 | 15,0 | | | | | | | |
| | R0434922 | 22 | 15,0 | 17,0 | | | | | | | |
| | R0434925 | 25 | 17,0 | 20,0 | | | | | | | |
| | R0434928 | 28 | 18,0 | 23,0 | | | | | | | |
| | R0434930 | 30 | 20,0 | 25,0 | | | | | | | |
| | R0434935 | 35 | 25,0 | 30,0 | | | | | | | |
| | R0434940 | 40 | 30,0 | 35,0 | | | | | | | |



| Este plano es propiedad de Remaches Tudela S.L. todos los derechos reservados/ This drawing is the property of Remaches Tudela S.L. all rights reserved | | | | | | | | | | | |
|---|--|----------------------|--|--------------------------------------|--|--|--|--|--|--|--|
| DIBUJADO / DRAWN BY FECHA / DATE | | J.SANZ 15/11/2021 | | DENOMINACIÓN DESCRIPTION | | REMACHE CABEZA EXTRA GRANDE ESTÁNDAR/ EXTRA LARGE HEAD STANDARD RIVET | | ESPECIFICACIONES GENERALES GENERAL SPECIFICATIONS | | | |
| REVISIÓN / REVISION FECHA / DATE | | Rev. 0 15/11/2021 | | CUERPO / BODY | | CLAVO / MANDREL | | TOLERANCIAS Según plano/ TOLERANCES According drawing | | | |
| | | MATERIAL | | ALUMINIO 3,5% MG ALUMINUM 3,5% MG | | INOXIDABLE 304 STAINLESS STEEL 304 | | UNIDADES mm | | | |
| | | ACABADO FINISHED | | ABRILLANTADO BRIGHTNESS | | ABRILLANTADO BRIGHTNESS | | REFERENCIA REFERENCE | | | |
| | | | | | | R04349 | | | | | |
| | | | | | | | | A4 | | | |