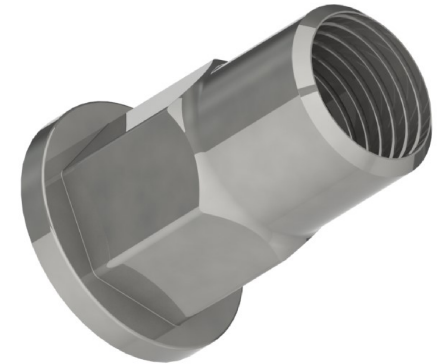
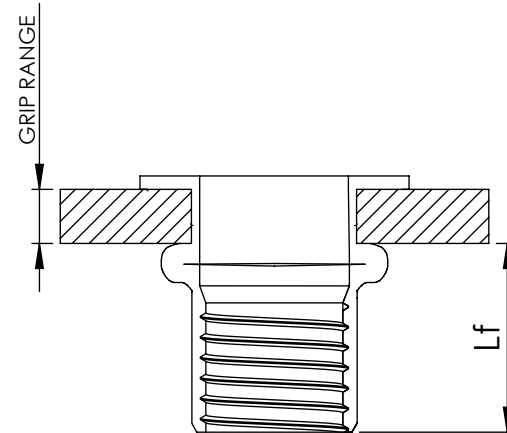
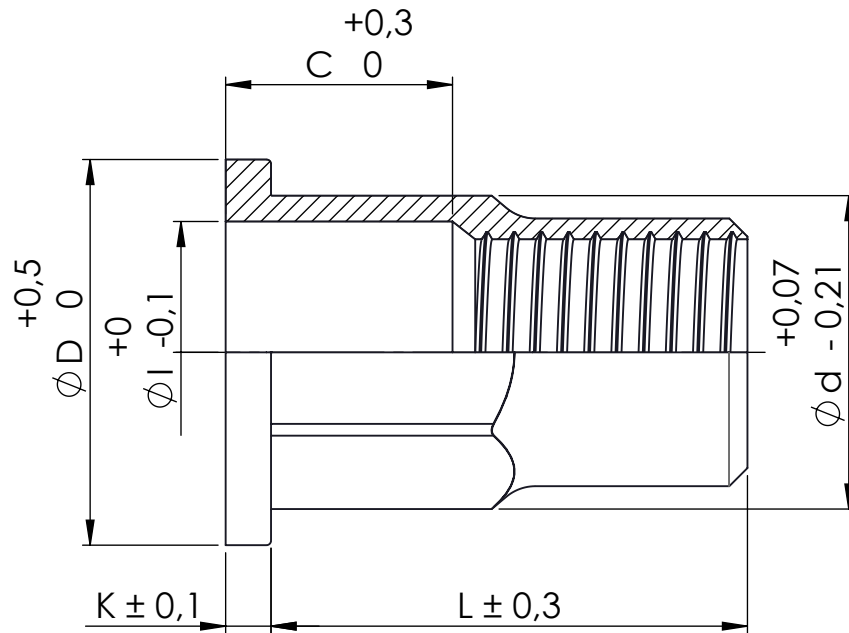


CODE NO.	THREAD	GRIP RANGE	DRILL	d	D	K	L	I	C	Lf	TENSILE(KN)	TORQUE (Nm)
TR04115LF2HS	M4-P0,7	0,5-3,0	H6,1	H5,9	Ø8,5	1,00	11,50	4,90	6,00	7,50	6,80	3,00
TR05135LF2HS	M5-P0,8	0,5-3,0	H7,1	H6,9	Ø9,5	1,00	13,50	5,90	6,50	8,50	10,00	6,00
TR06155LF2HS	M6-P1,0	0,5-3,0	H9,1	H8,9	Ø12,0	1,50	15,50	7,90	6,70	11,00	15,00	10,00
TR08175LF2HS	M8-P1,25	0,5-3,0	H11,1	H10,9	Ø14,5	1,50	17,50	9,90	8,00	11,50	27,00	24,00
TR10220LF2HS	M10-P1,5	1,0-4,0	H13,1	H12,9	Ø16,0	2,00	22,00	11,90	10,00	15,50	37,00	48,00



Este plano es propiedad de Remaches Tudela S.L. todos los derechos reservados/ This drawing is property of Remaches Tudela S.L. all rights reserved

DIBUJADO / DRAWN BY FECHA / DATE	J.SANZ 15/11/2021	DENOMINACIÓN DESCRIPTION	TUERCA REM. ACERO C.ANCHA SEMI-HEXAGONAL RAN. ABIERTA / RIVET NUT FLAT HEAD KNURLED STEEL BODY SEMI-HEX. OPEN-END	ESPECIFICACIONES GENERALES GENERAL SPECIFICATIONS
REVISIÓN / REVISION FECHA / DATE	Rev. 0 15/11/2021	MATERIAL MATERIAL	ACERO 1008 / STEEL 1008	TOLERANCIAS TOLERANCES
		ACABADO FINISHED	CINCADO / ZINC PLATED	Según plano/ According drawing
		REFERENCIA REFERENCE	LF2HS	UNIDADES UNITS
				mm
				⊕
				A4