



BARRAS DE IMPACTO SERIE 4390 **SLIDER HAMMER SERIE 4390**



Manual de instrucciones *Manual instructions*



ES

MI4390
Rev. 1- 26.01.2023



EN

Contacto: ventas@forza.es / www.forza.es

Instrucciones generales / General instructions



1- Mantenga las normas de higiene y seguridad en el trabajo. / *Keep the standards of hygiene and safety at work.*

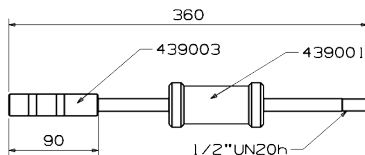
2- Utilice los elementos de protección individual obligatorios. / *Always wear suitable personal protective equipment.*

Barra de impacto 4390 - 1Kg/ 4390 Slider hammer

Es la más común. / *It is the most common bar.*

Se utiliza para extracciones de interiores con pinza o pequeños extractores. / *It is used for interior extractions with collets or small pullers.*

Hasta 1Kg. / *Up to 1Kg.*

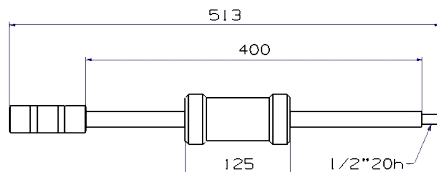
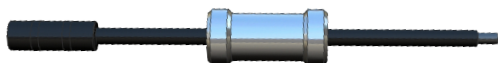


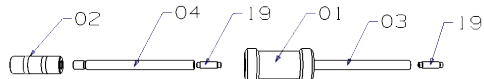
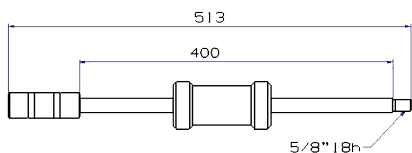
Barra de impacto 4394 - 2Kg/ 4394 Slider hammer

Para trabajar con más fuerza de extracción. / *To work with more extraction force.*

Dos roscas de salida para montar diversos accesorios. / *Two output threads to mount various accessories.*

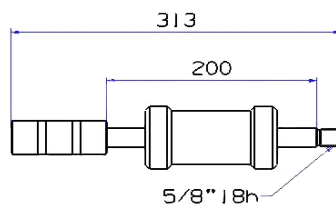
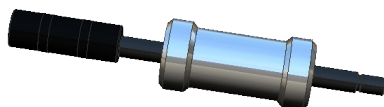
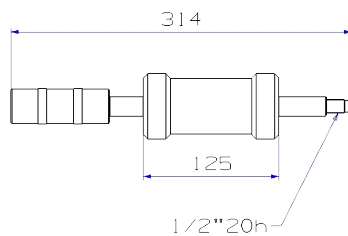
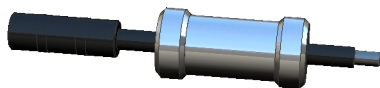
Rosca- 1/2" 20h UN - Rosca- 5/8" 18h UN





Esta barra se puede montar en posición corta si fuera necesario.

This bar can be mounted in a short position if necessary.



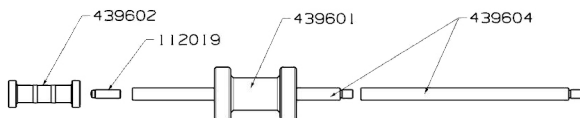
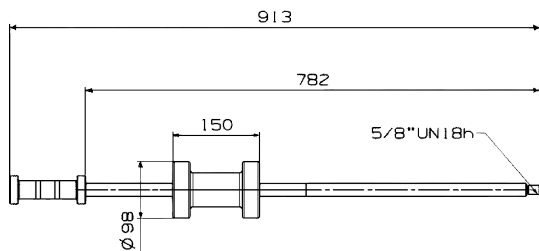
Barra de impacto 4396 - 5Kg/ 5Kg - 4396 Slider hammer

Para trabajar con más fuerza de extracción. / *To work with more extraction force.*

Dos roscas de salida para montar diversos accesorios. / *Two output threads to mount various accessories.*

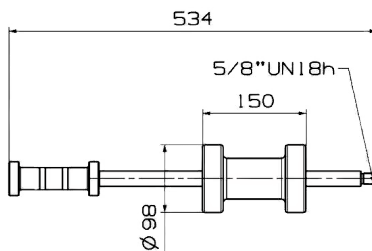
Rosca- 1/2" 20h UN - Rosca- 5/8" 18h UN





Esta barra se puede montar en posición corta si fuera necesario.

This bar can be mounted in a short position if necessary.

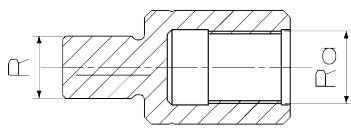


Adaptadores roscados / Threaded adapters

Macho / Male



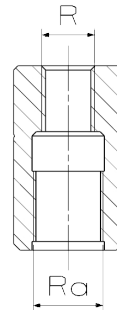
Referencia Reference	R	Ra	Barra Hammer
1110312	M-12	5/8" 18h	4394 4396
1110314	M-14	5/8" 18h	
1110316	M-16	5/8" 18h	
1110318	M-18	5/8" 18h	
1110320	M-20	5/8" 18h	



Referencia Reference	R	Ra	Barra Hammer
11103122	M12 x 1,5	5/8" 18h	4394 4396
11103124	M12 x 1,25	5/8" 18h	
11103142	M14 x 1,5	5/8" 18h	
11103162	M16 x 1,5	5/8" 18h	
11103202	M20 x 1,5	5/8" 18h	
110231-2	1/2" 20h	5/8" 18h	

Hembra / Female

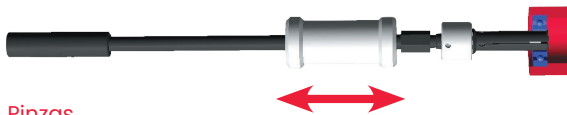
Referencia Reference	R	Ra	Barra Hammer
11104122	M12 x 1,5	5/8" 18h	4394 4396
11104124	M12 x 1,25	5/8" 18h	
11104142	M14 x 1,5	5/8" 18h	
11104162	M16 x 1,5	5/8" 18h	
2525	M10 x 1,5	1/2" 20h	4390 4394
2526	M16 x 2	1/2" 20h	
4022	M8 x 1,25	1/2" 20h	
111017	5/8" 18h	1/2" 20h	
515012	M12 x 1,5	1/2" 20h	
515014	M14 x 1,5	1/2" 20h	
515017	M17 x 0,75	1/2" 20h	
515027	M27 x 1	1/2" 20h	
515617	M17 x 1	1/2" 20h	
515620	M20 x 1	1/2" 20h	
515625	M25 x 1	1/2" 20h	
515627	M27 x 1	1/2" 20h	



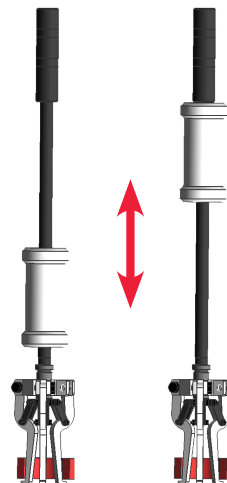
Instrucciones de uso / Use instructions

1.- Enrosque el extractor de pinzas o extractor de interiores en el extremo de la barra de impacto. / Thread the collet puller or internal puller onto the end of the impact bar

2.- Golpee con fuerza con la maza de inercia contra el mango de la barra. / Using the swing hammer, strike hard against the handle of the bar.



Pinzas



Extractor de interiores



S.L. de Herramientas Especiales Forza
San Miguel de Acha, 24
010110 Vitoria-Gasteiz (España)
Tlf.: 945 24 97 16